

Product datasheet for **TP320884**

Esa1 (FLOT2) (NM_004475) Human Recombinant Protein

Product data:

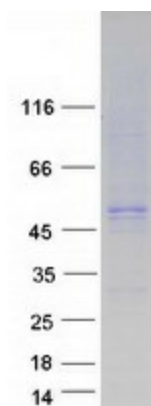
Product Type:	Recombinant Proteins
Description:	Purified recombinant protein of Homo sapiens flotillin 2 (FLOT2), 20 µg
Species:	Human
Expression Host:	HEK293T
Expression cDNA Clone or AA Sequence:	>RC220884 representing NM_004475 Red =Cloning site Green =Tags(s)
	<p>MGNCHTVGPNEALVSGGCCSDYKQYVFGGWAWAWWCISDTQRISLEIMTLQPRCEDVETAEGVALTVT GVAQVKIMTEKELLAVACEQFLGKNVQDIKNVVLQTLEGHLSILGTLTVEQIYQDRDQFAKLVREVAAP DVGRMGIEILSFTIKDVYDKVDYLSSLGKTQTAVVQRDADIGVAEAERDAGIREAECKKEMLDVKFMADT KIADSKRAFELQKSAFSEEVNIKTAEAQLAYELQGAREQQKIRQEEIEIEVVQRKKQIAVEAQEILRTDK ELIATVRRPAEAEAHRIQQIAEGEKVKQVLLAQAEAEKIRKIGEAEEAVIEAMGKAEAEARMKLA EAYQK YGDAAKMALVLEALPQIAAKIAAPLTKVDEIVVLSGDNSKVTSEVNRLLAELPASVHALTGVDLSKIPLI KKATGVQV</p> <p>TRTRPLEQKLISEEDLAANDILDYKDDDDKV</p>
Tag:	C-Myc/DDK
Predicted MW:	46.9 kDa
Concentration:	>0.05 µg/µL as determined by microplate BCA method
Purity:	> 80% as determined by SDS-PAGE and Coomassie blue staining
Buffer:	25 mM Tris-HCl, 100 mM glycine, pH 7.3, 10% glycerol
Preparation:	Recombinant protein was captured through anti-DDK affinity column followed by conventional chromatography steps.
Note:	For testing in cell culture applications, please filter before use. Note that you may experience some loss of protein during the filtration process.
Storage:	Store at -80°C.
Stability:	Stable for 12 months from the date of receipt of the product under proper storage and handling conditions. Avoid repeated freeze-thaw cycles.
RefSeq:	<u>NP_004466</u>



[View online »](#)

Locus ID:	2319
UniProt ID:	Q14254 , A0A024QZ62 , Q9BTI6
RefSeq Size:	2659
Cytogenetics:	17q11.2
RefSeq ORF:	1284
Synonyms:	ECS-1; ECS1; ESA; ESA1; M17S1
Summary:	Caveolae are small domains on the inner cell membrane involved in vesicular trafficking and signal transduction. This gene encodes a caveolae-associated, integral membrane protein, which is thought to function in neuronal signaling. [provided by RefSeq, Jul 2008]
Protein Families:	Druggable Genome
Protein Pathways:	Insulin signaling pathway

Product images:



Coomassie blue staining of purified FLOT2 protein (Cat# TP320884). The protein was produced from HEK293T cells transfected with FLOT2 cDNA clone (Cat# [RC220884]) using MegaTran 2.0 (Cat# [TT210002]).