

Product datasheet for **TP320847M**

SOCS1 (NM_003745) Human Recombinant Protein

Product data:

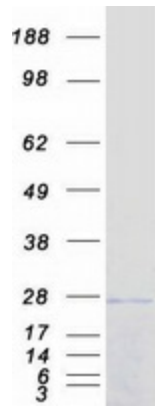
Product Type:	Recombinant Proteins
Description:	Recombinant protein of human suppressor of cytokine signaling 1 (SOCS1), 100 µg
Species:	Human
Expression Host:	HEK293T
Expression cDNA Clone or AA Sequence:	>RC220847 representing NM_003745 Red =Cloning site Green =Tags(s)
	<p>MVAHNQVAADNAVSTAAEPRRRPEPSSSSSSPAAPARPRPCPAVPAPAPGDTHFRTFRSHADYRRITRA SALLDACGFYWGPLSVHGAHERLRAEPVGTFLVRDSRQRNCFALSVMASGPTSIRVHFQAGRFDLHLDGS RESFDCLFELLEHYVAAPRRMLGAPLRQRRVRLPLQELCRQIVATVGRENLARIPVLRDYLSSFPFQ I</p> <p>TRTRPLEQKLISEEDLAANDILDYKDDDDKV</p>
Tag:	C-Myc/DDK
Predicted MW:	23.4 kDa
Concentration:	>0.05 µg/µL as determined by microplate BCA method
Purity:	> 80% as determined by SDS-PAGE and Coomassie blue staining
Buffer:	25 mM Tris-HCl, 100 mM glycine, pH 7.3, 10% glycerol
Preparation:	Recombinant protein was captured through anti-DDK affinity column followed by conventional chromatography steps.
Note:	For testing in cell culture applications, please filter before use. Note that you may experience some loss of protein during the filtration process.
Storage:	Store at -80°C.
Stability:	Stable for 12 months from the date of receipt of the product under proper storage and handling conditions. Avoid repeated freeze-thaw cycles.
RefSeq:	NP_003736
Locus ID:	8651
UniProt ID:	O15524 , Q4JHT5



[View online »](#)

RefSeq Size:	1216
Cytogenetics:	16p13.13
RefSeq ORF:	633
Synonyms:	AISIMD; CIS1; CISH1; JAB; SOCS-1; SSI-1; SSI1; TIP-3; TIP3
Summary:	This gene encodes a member of the STAT-induced STAT inhibitor (SSI), also known as suppressor of cytokine signaling (SOCS), family. SSI family members are cytokine-inducible negative regulators of cytokine signaling. The expression of this gene can be induced by a subset of cytokines, including IL2, IL3 erythropoietin (EPO), CSF2/GM-CSF, and interferon (IFN)-gamma. The protein encoded by this gene functions downstream of cytokine receptors, and takes part in a negative feedback loop to attenuate cytokine signaling. Knockout studies in mice suggested the role of this gene as a modulator of IFN-gamma action, which is required for normal postnatal growth and survival. [provided by RefSeq, Jul 2008]
Protein Families:	Druggable Genome, Stem cell - Pluripotency, Stem cell relevant signaling - JAK/STAT signaling pathway
Protein Pathways:	Insulin signaling pathway, Jak-STAT signaling pathway, Type II diabetes mellitus, Ubiquitin mediated proteolysis

Product images:



Coomassie blue staining of purified SOCS1 protein (Cat# [TP320847]). The protein was produced from HEK293T cells transfected with SOCS1 cDNA clone (Cat# [RC220847]) using MegaTran 2.0 (Cat# [TT210002]).