

## Product datasheet for TP320834

### GTPBP9 (OLA1) (NM\_013341) Human Recombinant Protein

#### Product data:

Product Type:	Recombinant Proteins
Description:	Recombinant protein of human Obg-like ATPase 1 (OLA1), transcript variant 1, 20 µg
Species:	Human
Expression Host:	HEK293T
Expression cDNA Clone or AA Sequence:	>RC220834 representing NM_013341 Red=Cloning site Green=Tags(s)
	MPPKKGGDGIKPPPIIGRFGTSLKIGIVGLPNVVGKSTFFNVLNLSQASAENFPFCTIDPNESRVPVPPER FDFLCQYHKPASKIPAFLNVVDIAGLVKGAHNGQGLGNAFLSHISACDGIFHLTRAFEDDDITHVEGSVD PIRDIEIIHEELQLKDEEMIGPIIDKLEKVAVRGGDKLKPEYDIMCKVKSWWIDQKKPVRFYHDWNDKE IEVLNKHFLTSKPMVYLVNLSEKDYIRKKNKWLIIKEWVDKYDPGALVIPFSGALELKLQELSAEERQ KYLEANMTQSALPKI KAGFAALQLEYFFTAGPDEVRAWTIRKGT KAPQAAGKIHTDFEKG FIMAEVMKY EDFKEEGSENAVKAAGKYRQQGRNYIVEDGDIIFFKFNTPPQPKKK
	TRTRPLEQKLISEEDLAANDILDYKDDDDKV
Tag:	C-Myc/DDK
Predicted MW:	44.6 kDa
Concentration:	>0.05 µg/µL as determined by microplate BCA method
Purity:	> 80% as determined by SDS-PAGE and Coomassie blue staining
Buffer:	25 mM Tris-HCl, 100 mM glycine, pH 7.3, 10% glycerol
Preparation:	Recombinant protein was captured through anti-DDK affinity column followed by conventional chromatography steps.
Note:	For testing in cell culture applications, please filter before use. Note that you may experience some loss of protein during the filtration process.
Storage:	Store at -80°C.
Stability:	Stable for 12 months from the date of receipt of the product under proper storage and handling conditions. Avoid repeated freeze-thaw cycles.
RefSeq:	<a href="#">NP_037473</a>
Locus ID:	29789

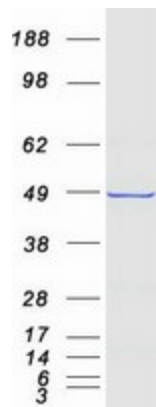


[View online »](#)

UniProt ID: [Q9NTK5](#)  
RefSeq Size: 4356  
Cytogenetics: 2q31.1  
RefSeq ORF: 1188  
Synonyms: DOC45; GBP45; GTBP9; GTPBP9; PTD004

**Summary:** This gene encodes a member of the GTPase protein family. The encoded protein interacts with breast cancer-associated gene 1 (BRCA1) and BRCA1-associated RING domain protein (BARD1), and is involved in centrosome regulation. Overexpression of this gene has been observed in multiple types of cancer and may be associated with poor survival. Pseudogenes of this gene have been defined on chromosomes 17 and 22. [provided by RefSeq, Jun 2016]

### Product images:



Coomassie blue staining of purified OLA1 protein (Cat# TP320834). The protein was produced from HEK293T cells transfected with OLA1 cDNA clone (Cat# [RC220834]) using MegaTran 2.0 (Cat# [TT210002]).