

Product datasheet for **TP320821M**

NAP1L1 (NM_004537) Human Recombinant Protein

Product data:

Product Type: Recombinant Proteins
Description: Recombinant protein of human nucleosome assembly protein 1-like 1 (NAP1L1), transcript variant 2, 100 µg
Species: Human
Expression Host: HEK293T
Expression cDNA Clone or AA Sequence: >RC220821 representing NM_004537
Red=Cloning site **Green**=Tags(s)

MADIDNKEQSELDQDLDDVEEVEEEETGEETKLKARQLTVQMMQNPQILAALQERLDGLVETPTGYIESL
PRVVKRRVNALKNLQVKCAQIEAKFYEEVHDLERKYAVLYQPLFDKRFEIINAIYEPTEECEWKPDEED
EISEELKEKAKIEDEKKDEEKEDPKGIPEFWLTVFKNVDLLSDMVQEHDEPILKHLKDIKVKFSDAGQPM
SFVLEFHFEFNEYFTNEVLTKTYRMRSEPDDSDPFSDGPEIMGCTGCQIDWKKGKNVLTIKTIKKQKHK
GRGTVRTVTKTVSNDSFFNFFAPPEVPESGDLDDDAEAILAADFEIGHFLRERIIPRSVLYFTGEAIEDD
DDDYDEEGEEADEEGEEEGDEENDPDYDPKKDQNPAAECKQQ

TRTRPLEQKLISEEDLAANDILDYKDDDDKV

Tag: C-Myc/DDK
Predicted MW: 45.2 kDa
Concentration: >0.05 µg/µL as determined by microplate BCA method
Purity: > 80% as determined by SDS-PAGE and Coomassie blue staining
Buffer: 25 mM Tris-HCl, 100 mM glycine, pH 7.3, 10% glycerol
Preparation: Recombinant protein was captured through anti-DDK affinity column followed by conventional chromatography steps.
Note: For testing in cell culture applications, please filter before use. Note that you may experience some loss of protein during the filtration process.
Storage: Store at -80°C.
Stability: Stable for 12 months from the date of receipt of the product under proper storage and handling conditions. Avoid repeated freeze-thaw cycles.
RefSeq: [NP_004528](#)

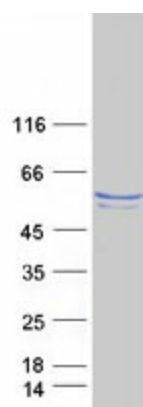


[View online »](#)

Locus ID:	4673
UniProt ID:	P55209
RefSeq Size:	2908
Cytogenetics:	12q21.2
RefSeq ORF:	1173
Synonyms:	NAP1; NAP1L; NRP

Summary: This gene encodes a member of the nucleosome assembly protein (NAP) family. This protein participates in DNA replication and may play a role in modulating chromatin formation and contribute to the regulation of cell proliferation. Alternative splicing results in multiple transcript variants encoding different isoforms; however, not all have been fully described. [provided by RefSeq, Apr 2015]

Product images:



Coomassie blue staining of purified NAP1L1 protein (Cat# [TP320821]). The protein was produced from HEK293T cells transfected with NAP1L1 cDNA clone (Cat# [RC220821]) using MegaTran 2.0 (Cat# [TT210002]).