

Product datasheet for **TP320773M**

G protein regulated inducer of neurite outgrowth 2 (GPRIN2) (NM_014696) Human Recombinant Protein

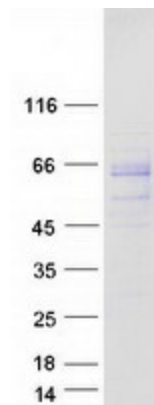
Product data:

Product Type:	Recombinant Proteins
Description:	Recombinant protein of human G protein regulated inducer of neurite outgrowth 2 (GPRIN2), 100 µg
Species:	Human
Expression Host:	HEK293T
Expression cDNA Clone or AA Sequence:	>RC220773 representing NM_014696 Red =Cloning site Green =Tags(s) MSSSRPEPGPWAPLSPRLQPLSQSSSLLGEGREQRPELHKASSTMWQAQLGEASTRPQAPEEEGNPPE SMKPARASGPKARPSAGGHWSSTVGNVSTMGGDLCLRLRAPSAAAMQRSHSDLVRSTQMRGHSGARKAS LSCSALGSSPVHRAQLQPGGTSQGQAPAGLERDLAPEDETSNSAWMLGASQLSVPPLDLGDTTAHSSS AQAEPKAAEQLATTTCHALPPAALLCGMREMREVGAGGCCHALPATGILAFPKLVASVSEGLQAQHGK IHCRLSGGLPGHSHCCAHLWGPAGLVPEPGSRTKDVWTMTSANDLAPAEASPLSAQDAGVQAAPVAACKA VATSPSLEAPAALHVFPEVTLGSSLEEAPSPVRDVRWDAEGMTWEVYGAAVDPEVLGVAIQKHLEMQFEQ LQRAPASEDSLSVEGRRGPLRAVMQSLRRPSCCGCSGAAPE TRTRPLEQKLISEEDLAANDILDYKDDDDKV
Tag:	C-Myc/DDK
Predicted MW:	47.3 kDa
Concentration:	>0.05 µg/µL as determined by microplate BCA method
Purity:	> 80% as determined by SDS-PAGE and Coomassie blue staining
Buffer:	25 mM Tris-HCl, 100 mM glycine, pH 7.3, 10% glycerol
Preparation:	Recombinant protein was captured through anti-DDK affinity column followed by conventional chromatography steps.
Note:	For testing in cell culture applications, please filter before use. Note that you may experience some loss of protein during the filtration process.
Storage:	Store at -80°C.



[View online »](#)

Stability:	Stable for 12 months from the date of receipt of the product under proper storage and handling conditions. Avoid repeated freeze-thaw cycles.
RefSeq:	NP_055511
Locus ID:	9721
UniProt ID:	O60269
RefSeq Size:	1896
Cytogenetics:	10q11.22
RefSeq ORF:	1383
Synonyms:	GRIN2; KIAA0514
Summary:	May be involved in neurite outgrowth.[UniProtKB/Swiss-Prot Function]
Protein Families:	Stem cell - Pluripotency

Product images:

Coomassie blue staining of purified GPRIN2 protein (Cat# [TP320773]). The protein was produced from HEK293T cells transfected with GPRIN2 cDNA clone (Cat# [RC220773]) using MegaTran 2.0 (Cat# [TT210002]).