

Product datasheet for **TP320758L**

GIMAP8 (NM_175571) Human Recombinant Protein

Product data:

Product Type:	Recombinant Proteins
Description:	Recombinant protein of human GTPase, IMAP family member 8 (GIMAP8), 1 mg
Species:	Human
Expression Host:	HEK293T
Expression cDNA Clone or AA Sequence:	>RC220758 protein sequence Red =Cloning site Green =Tags(s)

MSEQSCQMSELRLLLLGKCRSGKSATGNAILGKHVFKSKFSDQTVIKMCQRESWVLRERKVVWIDTPDLF
SSIACAEDKQRNIQHCLELSAPSLHALLLVIAIGHFTREDEETAKGIQQVFGAEARRHIIIVFTRKDDL
DDLLQDFIEKNKPLKQLVQDYEGRYCIFNKNKTSKDEQITQVLELLRKVESLVNTNGGPYHVNFKTEGSR
FQDCVNEAASQEGDKPQGPRERQLQSTGPEQNPGTSELTVLLVGKRGAGKSAAGNSILGRQAFQTFSEQ
SVTQSFLSESRSWRKKKVSIIADAPDISSLKNIDSEVRKHICTGPHAFLLVTPLGFTYKNDEAVLSTIQNN
FGEKFFEYMIILLTRKEDLGDQDLDTFLRNSNKALYGLIQCKNRYSAFNYRATGEEEQRADELLEKIE
SMVHQNGNKHCVFREKETLNIVLVGRSGTGKSATGNSILGSLVFTSRLRAQPVTKTSQSGRRRTWDGQEV
VVDTPSFNQMLDVEKDP SRL EEEVKRCLSCCEKGD TFFVLV FQLGRFTEEDKTAVAKLEAIFGADFTKYA
IMLFTRKEDLGAGNLEDFMKNSDNKALRRIFKCKGRRVCAFNNKETGQAQETQVKALLTKVNDLRKESGW
SGYPHTQENVSKLIKNVQEMSQAELLLKNLIGILQ

TRTRPLEQKLISEEDLAANDILDYKDDDDKV

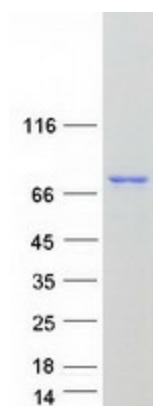
Tag:	C-Myc/DDK
Predicted MW:	74.7 kDa
Concentration:	>0.05 µg/µL as determined by microplate BCA method
Purity:	> 80% as determined by SDS-PAGE and Coomassie blue staining
Buffer:	25 mM Tris-HCl, 100 mM glycine, pH 7.3, 10% glycerol
Preparation:	Recombinant protein was captured through anti-DDK affinity column followed by conventional chromatography steps.
Note:	For testing in cell culture applications, please filter before use. Note that you may experience some loss of protein during the filtration process.
Storage:	Store at -80°C.



[View online »](#)

Stability:	Stable for 12 months from the date of receipt of the product under proper storage and handling conditions. Avoid repeated freeze-thaw cycles.
RefSeq:	NP_783161
Locus ID:	155038
UniProt ID:	Q8ND71
RefSeq Size:	3952
Cytogenetics:	7q36.1
RefSeq ORF:	1995
Synonyms:	IAN-9; IAN6; IAN9; IANT
Summary:	This gene encodes a protein belonging to the GTP-binding superfamily and to the immun-associated nucleotide (IAN) subfamily of nucleotide-binding proteins. In humans, the IAN subfamily genes are located in a cluster at 7q36.1. [provided by RefSeq, Jul 2008]

Product images:



Coomassie blue staining of purified GIMAP8 protein (Cat# [TP320758]). The protein was produced from HEK293T cells transfected with GIMAP8 cDNA clone (Cat# [RC220758]) using MegaTran 2.0 (Cat# [TT210002]).