

Product datasheet for TP320737

KIAA0664 (CLUH) (NM_015229) Human Recombinant Protein

Product data:

Product Type:	Recombinant Proteins
Description:	Purified recombinant protein of Homo sapiens KIAA0664 (KIAA0664), 20 µg
Species:	Human
Expression Host:	HEK293T
Expression cDNA Clone or AA Sequence:	>RC220737 representing NM_015229 Red=Cloning site Green=Tags(s)

MLLNGDCPESLKKEAAAAEPPRENLDEAGPGDETTGQEVIVIQDTGFSVKILAPGIEPFSLQVSPQEMV
QEIHQVLMREDTCHRTCFSLHLDGNVLDHFSSELRSVEGLQEGSVLRVVEEPTVREARIHVHRVRLDK
SLDPSDAFNGVDCNSLSFLSVFTDGDLDGDSGKRKKGLEMDPIDCTPPEYILPGSRERPLCPLQPQNRDWK
PLQCLKVLTMGWNPPPGNRKMHGDLMYLFVITAEDRQVSITASTRGFYLNQSTAYHFNPKPASPRFLSH
SLVELLNQISPTFKKNFAVLQKKRVQRHPFERIATPFQVYSWTAPQAEHAMDCVRAEDAYTSRLGYEEHI
PGQTRDWNEELQTTRELPRKNLPERLLRERAIKRVHSDFTAAATRGAMAVIDGNVMAINPSEETKMQMFI
WNNIFFSLGFDVRDHYKDFGGDVAAYVAPTNDLNGVRTYNAVDVEGLYTLGTVVVDYRGYRVTASIIIPG
ILERDQEQSVIYGSIDFGKTVVSHPRYLELLERTSRPLKILRHQVLNDRDEEVELCSSVECKGIIGNDGR
HYILDLLRTFPPDLNFLPVPGEELPEECARAGFPRAHRHKLCCLRQELVDAFVEHRYLLFMKLAALQLMQ
QNASQLETSSLENGGPPSSLESKSEDPGQEQAGSEEEGSSASGLAKVKELAEIAADDGTDPRSREVIRN
ACKAVGSISSTAFDIRFNPDI FSPGVRFPESCQDEV RDQKQLLKDAAAFLSCQIPGLVKDCMEHAVLPV
DGATLAEVMRQRGINMRYLGKVLVLRSPARHQLDHVFKIGIGELITRSKHFITYLQGVLSGLSAA
ISHFLNCFSSYPNPVAHLPADELVSKKRNRKRNRPPGAADNTAWAVMTPQELWKNICQEAKNYFDFDL
ECETVDQAVETYGLQKITLLREISLKTGIQVLLKEYSFD SRHKPAFTEEDVLNIFPVVKHVNPKASDAFH
FFQSGQAKVQQGFLKEGCELINEALNLFNNVYGAMHVETACLRLLARLHYIMGDYAEALSNOQKAVLMS
ERVMGTEHPNTIQEYMH LALYCFASSQLSTALSLLYRARYLMLLVFGEDHPEMALLDNNIGLV LHGVMEY
DLSLRFLENALAVSTKYHGPKALKVALSHHLVARVYESKAEFRSALQHEKEGYTIYKTQLGEDHEKTKES
SEYLKCLTQQAVALQRTMNEIYRNGSSANIPPLKFTAPSMASVLEQLNVINGILFIPLSQKDLENLKA EV
ARRHQLQEASRNRDRAE EPMATEPAPAGAPGDLGSQPPAAKDPSPSVQG

SGPTRRRRLEQKLISEEDLAANDILDYKDDDDKV

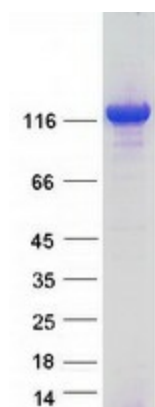
Tag:	C-Myc/DDK
Predicted MW:	146.5 kDa
Concentration:	>0.05 µg/µL as determined by microplate BCA method



[View online »](#)

Purity:	> 80% as determined by SDS-PAGE and Coomassie blue staining
Buffer:	25 mM Tris-HCl, 100 mM glycine, pH 7.3, 10% glycerol
Preparation:	Recombinant protein was captured through anti-DDK affinity column followed by conventional chromatography steps.
Note:	For testing in cell culture applications, please filter before use. Note that you may experience some loss of protein during the filtration process.
Storage:	Store at -80°C.
Stability:	Stable for 12 months from the date of receipt of the product under proper storage and handling conditions. Avoid repeated freeze-thaw cycles.
RefSeq:	NP_056044
Locus ID:	23277
UniProt ID:	O75153
RefSeq Size:	5252
Cytogenetics:	17p13.3
RefSeq ORF:	3927
Synonyms:	CLU1
Summary:	mRNA-binding protein involved in proper cytoplasmic distribution of mitochondria. Specifically binds mRNAs of nuclear-encoded mitochondrial proteins in the cytoplasm and regulates transport or translation of these transcripts close to mitochondria, playing a role in mitochondrial biogenesis.[UniProtKB/Swiss-Prot Function]
Protein Families:	Druggable Genome

Product images:



Coomassie blue staining of purified CLUH protein (Cat# TP320737). The protein was produced from HEK293T cells transfected with CLUH cDNA clone (Cat# [RC220737]) using MegaTran 2.0 (Cat# [TT210002]).