

Product datasheet for TP320731L

E Cadherin (CDH1) (NM_004360) Human Recombinant Protein

Product data:

| | |
|---------------------------------------|---|
| Product Type: | Recombinant Proteins |
| Description: | Recombinant protein of human cadherin 1, type 1, E-cadherin (epithelial) (CDH1), 1 mg |
| Species: | Human |
| Expression Host: | HEK293T |
| Expression cDNA Clone or AA Sequence: | >RC220731 representing NM_004360 Red=Cloning site Green=Tags(s) |

MGPWSRSLALLLLLQVSSWLCQEPEPCHPGFDAESYFTVPRRHLEGRVLRVNFEDCTGRQRTAYFS
LDTRFKVGTGCVITVKRPLRFHNPQIHFLVYAWDSTYRKFKSTKVTLNVTGHHHRPPPHQASVSGIQAELL
TFPNSSPGLRRQKRDWVIPPISCPENEKGFPPKLNLVQIKSNKDKEGKVFYSITGQGADTPPVGVFIIERE
TGWLKVTEPLDRERIATYTLFHAVSSNGNAVEDPMEILITVTDQNDNKPEFTQEVFKGSVMEGALPGTS
VMEVTATDADDDVNTYNAAIAYTILSQDPELDPKMNFTINRNTGVISVTTGLDRESFPTYTLVWQAADL
QGEGLSTTATAVITVTDNDNPPIFNPTTYKGQVPENEANVVITLKVTDADAPNTPAWEAVYTLNDDG
GQFVTTNPVNNNGILKTAKGLDFEAKQYILHVAVTNVVPEVSLTTSTATVTVDVLDVNEAPIFVPE
KRVEVSEDFGVGQEITSYTAQEPDTFMEQKITYRIWRDTANWLEINPDTGAISTRAELDREDFEHVKNST
YTALIIATDNGSPVATGTGTLILLSDVNDNAPIPEPRTIFFCERNPKPQVINIIDADLPPNTSPFTAEL
THGASANWTIQYNDPTQESIILKPKMALEVGDYKINLKLMDNQNKDQVTTLEVSVCDCEGAAGVCRKAQP
VEAGLQIPAILGILGGILALLLILLLLLLFLRRRAVVKEPLLPPEDDTRDNVYYYDEEGGGEDDQDFDLS
QLHRGLDARPEVTRNDVAPTLMSVPRYLPRPANPDEIGNFIDENLKAADTDPTAPPYDSSLVFDYEGSGS
EAASLSSLNSSESDKDQDYDYLNEWGNRFKKLADMYGGGEDD

TRTRPLEQKLISEEDLAANDILDYKDDDDKV

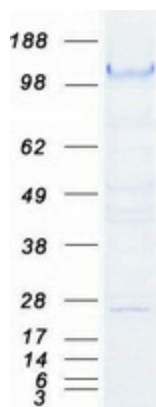
| | |
|----------------|--|
| Tag: | C-Myc/DDK |
| Predicted MW: | 94.8 kDa |
| Concentration: | >0.05 µg/µL as determined by microplate BCA method |
| Purity: | > 80% as determined by SDS-PAGE and Coomassie blue staining |
| Buffer: | 25 mM Tris-HCl, 100 mM glycine, pH 7.3, 10% glycerol |
| Preparation: | Recombinant protein was captured through anti-DDK affinity column followed by conventional chromatography steps. |



[View online »](#)

| | |
|--------------------------|--|
| Note: | For testing in cell culture applications, please filter before use. Note that you may experience some loss of protein during the filtration process. |
| Storage: | Store at -80°C. |
| Stability: | Stable for 12 months from the date of receipt of the product under proper storage and handling conditions. Avoid repeated freeze-thaw cycles. |
| RefSeq: | NP_004351 |
| Locus ID: | 999 |
| UniProt ID: | P12830 , A0A0U2ZQU7 , B3GN61 |
| RefSeq Size: | 4828 |
| Cytogenetics: | 16q22.1 |
| RefSeq ORF: | 2646 |
| Synonyms: | Arc-1; BCDS1; CD324; CDHE; ECAD; LCAM; UVO |
| Summary: | This gene encodes a classical cadherin of the cadherin superfamily. Alternative splicing results in multiple transcript variants, at least one of which encodes a preproprotein that is proteolytically processed to generate the mature glycoprotein. This calcium-dependent cell-cell adhesion protein is comprised of five extracellular cadherin repeats, a transmembrane region and a highly conserved cytoplasmic tail. Mutations in this gene are correlated with gastric, breast, colorectal, thyroid and ovarian cancer. Loss of function of this gene is thought to contribute to cancer progression by increasing proliferation, invasion, and/or metastasis. The ectodomain of this protein mediates bacterial adhesion to mammalian cells and the cytoplasmic domain is required for internalization. This gene is present in a gene cluster with other members of the cadherin family on chromosome 16. [provided by RefSeq, Nov 2015] |
| Protein Families: | Druggable Genome, ES Cell Differentiation/IPS, Transmembrane |
| Protein Pathways: | Adherens junction, Bladder cancer, Cell adhesion molecules (CAMs), Endometrial cancer, Melanoma, Pathogenic Escherichia coli infection, Pathways in cancer, Thyroid cancer |

Product images:



Coomassie blue staining of purified CDH1 protein (Cat# [TP320731]). The protein was produced from HEK293T cells transfected with CDH1 cDNA clone (Cat# [RC220731]) using MegaTran 2.0 (Cat# [TT210002]).