

## Product datasheet for **TP320718L**

### **C20orf112 (NOL4L) (NM\_080616) Human Recombinant Protein**

#### **Product data:**

<b>Product Type:</b>	Recombinant Proteins
<b>Description:</b>	Purified recombinant protein of Homo sapiens chromosome 20 open reading frame 112 (C20orf112), 1 mg
<b>Species:</b>	Human
<b>Expression Host:</b>	HEK293T
<b>Expression cDNA</b>	>RC220718 representing NM_080616
<b>Clone or AA Sequence:</b>	Red=Cloning site Green=Tags(s)

MSDSTWMSADPHLASSLSPSQDERMRSPQNLHSQEDDDSSSESGSGNGSSTLNPSTSSSTQGDPAFPEMN  
GNGAVAPMDFTTAAEDQPINLCKLPPATALGTASYPSDGCGADGLRSRVKYGVKTTPEPPYSSGSYDS  
IKTEVSGPEDLTVGRAPTADDDDDHDDHEDNDKMNDSEGMDPERLKAFNMFVRLFVDENLDRMVPISK  
QPKEEIQAIIESCSRQFPEFQERARKRIRTYLKSCRMMKNGMEMTRPTPPHLTSAMAENILAAACESET  
RKAAKRMRLEIYQSSQDEPIALDKQHSRDSAAITHSTYSLPASSYSQDPVYANGGLNYSYRGYGALSSNL  
QPPASLQGTGNHNGPTDLSMKGGASTTSTTPTPTPSSTSTSRPVPTAQLSPTEISAVRQLIAGYRESAAF  
LLRSADELENLILQQN

TRTRPLEQKLISEEDLAANDILDYKDDDDKV

<b>Tag:</b>	C-Myc/DDK
<b>Predicted MW:</b>	47 kDa
<b>Concentration:</b>	>0.05 µg/µL as determined by microplate BCA method
<b>Purity:</b>	> 80% as determined by SDS-PAGE and Coomassie blue staining
<b>Buffer:</b>	25 mM Tris-HCl, 100 mM glycine, pH 7.3, 10% glycerol
<b>Preparation:</b>	Recombinant protein was captured through anti-DDK affinity column followed by conventional chromatography steps.
<b>Note:</b>	For testing in cell culture applications, please filter before use. Note that you may experience some loss of protein during the filtration process.
<b>Storage:</b>	Store at -80°C.
<b>Stability:</b>	Stable for 12 months from the date of receipt of the product under proper storage and handling conditions. Avoid repeated freeze-thaw cycles.



[View online >](#)

RefSeq: [NP\\_542183](#)

Locus ID: 140688

UniProt ID: [Q96MY1](#)

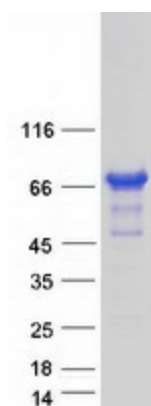
RefSeq Size: 2100

Cytogenetics: 20q11.21

RefSeq ORF: 1308

Synonyms: C20orf112; C20orf113

### Product images:



Coomassie blue staining of purified NOL4L protein (Cat# [TP320718]). The protein was produced from HEK293T cells transfected with NOL4L cDNA clone (Cat# [RC220718]) using MegaTran 2.0 (Cat# [TT210002]).