

Product datasheet for TP320701M

SNRPB (NM_198216) Human Recombinant Protein

Product data:

Product Type:	Recombinant Proteins
Description:	Recombinant protein of human small nuclear ribonucleoprotein polypeptides B and B1 (SNRPB), transcript variant 1, 100 µg
Species:	Human
Expression Host:	HEK293T
Expression cDNA Clone or AA Sequence:	>RC220701 representing NM_198216 Red =Cloning site Green =Tags(s) MTVGKSSKMLQHIDYRMRCILQDGRIFIGTFKAFDKHMNLILCDCDEFKIKPKNSKQAEREKRVLGLV LLRGENLVSMTEGPPPKDTGIARVPLAGAAGGPGIGRAAGRGIPAGVPMQPAPAGLAGPVRGVGGPSQQ VMTPQGRGTVAATAAATASIAGAPTQYPPGRGGPPPPMGRGAPPPGMMGPPPGMRPPMGPPMGIPPPGRG TPMGMPPPGMRPPPPGMRGPPPPGMRPPRP TRTRPLEQKLISEEDLAANDILDYKDDDDKV
Tag:	C-Myc/DDK
Predicted MW:	24.4 kDa
Concentration:	>0.05 µg/µL as determined by microplate BCA method
Purity:	> 80% as determined by SDS-PAGE and Coomassie blue staining
Buffer:	25 mM Tris-HCl, 100 mM glycine, pH 7.3, 10% glycerol
Preparation:	Recombinant protein was captured through anti-DDK affinity column followed by conventional chromatography steps.
Note:	For testing in cell culture applications, please filter before use. Note that you may experience some loss of protein during the filtration process.
Storage:	Store at -80°C.
Stability:	Stable for 12 months from the date of receipt of the product under proper storage and handling conditions. Avoid repeated freeze-thaw cycles.
RefSeq:	NP_937859
Locus ID:	6628



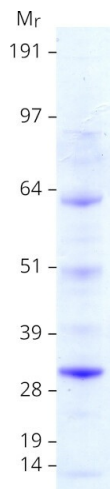
[View online »](#)

UniProt ID: [P14678](#)
RefSeq Size: 1007
Cytogenetics: 20p13
RefSeq ORF: 720
Synonyms: CCMS; COD; Sm-B/B'; SmB/B'; SmB/SmB'; snRNP-B; SNRPB1

Summary: The protein encoded by this gene is one of several nuclear proteins that are found in common among U1, U2, U4/U6, and U5 small ribonucleoprotein particles (snRNPs). These snRNPs are involved in pre-mRNA splicing, and the encoded protein may also play a role in pre-mRNA splicing or snRNP structure. Autoantibodies from patients with systemic lupus erythematosus frequently recognize epitopes on the encoded protein. Two transcript variants encoding different isoforms (B and B') have been found for this gene. [provided by RefSeq, Jul 2008]

Protein Families: Stem cell - Pluripotency
Protein Pathways: Spliceosome, Systemic lupus erythematosus

Product images:



Coomassie blue staining of purified SNRPB protein (Cat# [TP320701]). The protein was produced from HEK293T cells transfected with SNRPB cDNA clone (Cat# [RC220701]) using MegaTran 2.0 (Cat# [TT210002]).