

## Product datasheet for **TP320692L**

### Leucyl cystinyl aminopeptidase (LNPEP) (NM\_005575) Human Recombinant Protein

#### Product data:

Product Type:	Recombinant Proteins
Description:	Recombinant protein of human leucyl/cystinyl aminopeptidase (LNPEP), transcript variant 1, 1 mg
Species:	Human
Expression Host:	HEK293T
Expression cDNA Clone or AA Sequence:	>RC220692 representing NM_005575 <b>Red</b> =Cloning site <b>Green</b> =Tags(s)

MEPFTNDRLQLPRNMIENSMFEEEPDVDLAKEPCLHPLEPDEVEYEPGRSRLLVRLGHEHEEEDDY  
ESSAKLLGMSFMNRSSGLRNSATGYRQSPDGACSVPSARTMVCAFVIVAVSVIMVIYLLPRCTFTKEG  
CHKKNQSIGLIQPFATNGKLPWAQIRLPTAVVPLRYELSLHPNLTSMTFRGSVTISVQALQVTWNILH  
STGHNISRVTFMSAVSSQEKQAEILEYAYHGQIAIVAPEALLAGHNYTLKIEYSANISSYYGFYGFYSY  
DESNEKKYFAATQFEPLAARSAFPFCDEPAFKATFIKIIRDEQYALSNMPKSSVLDLDDGLVQDEFSE  
SVKMSTYLVAFIVGEMKNLSQDVNGTLVSIYAVPEKIGQVHYALETTVKLEFFQNYFEIQYPLKLDLV  
AIPDFEAGAMENWGLLTFREETLLYDSNTSSMADRKLVTKIIAHELAHQWFGNLVTMKWWNDLWLNAGFA  
TFMEYFSLEKIFKELSSYEDFLDARFKTMKKDSLNSSHPISVVQSSQEQIEMFDSLSYFKGSSLLMLK  
TYLSEDFVQHAWVLYLHNHSYASIQSDDLWDSFNEVTNQTLDVKRMMKWTWLQKGFPLVTQKKGKELFI  
QQERFFLNMKPEIQSDTSYLWHIPLSYVTEGRNYSKYQSVSLDDKSGVINLTEEVLWVKVNINMNGYY  
IVHYADDDWEALIHQLKINPYVLSDKDRANLINNIFELAGLGKVPKRAFDLINYLGNENHTAPITEALF  
QTDLIYNLLEKLGMDLASRLVTRVFKLLQNQIQQTWTDEGTPSMRELSALLEFACTHNLGNCSTTAM  
KLFDDWMASNGTQSLPTDVMTTVFVKVAKTDKGWSFLLGKYISIGSEAENKILEALASSEDVRKLYWLM  
KSSLNGDNFRTQKLSFIIRTVGRHFPGLHLLAWDFVKENWNKLVQKFPGLGYSYTIQNVAGSTYLFSTKTHL  
SEVQAFFENQSEATFRLRCVQEALVIQLNIQWMEKNLKSLLTWWL

**TRTRPLEQKLISEEDLAANDILDYKDDDDKV**

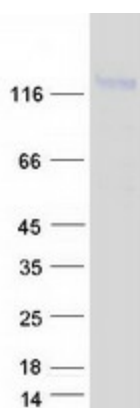
Tag:	C-Myc/DDK
Predicted MW:	117.2 kDa
Concentration:	>0.05 µg/µL as determined by microplate BCA method
Purity:	> 80% as determined by SDS-PAGE and Coomassie blue staining
Buffer:	25 mM Tris-HCl, 100 mM glycine, pH 7.3, 10% glycerol



[View online »](#)

<b>Preparation:</b>	Recombinant protein was captured through anti-DDK affinity column followed by conventional chromatography steps.
<b>Note:</b>	For testing in cell culture applications, please filter before use. Note that you may experience some loss of protein during the filtration process.
<b>Storage:</b>	Store at -80°C.
<b>Stability:</b>	Stable for 12 months from the date of receipt of the product under proper storage and handling conditions. Avoid repeated freeze-thaw cycles.
<b>RefSeq:</b>	<a href="#">NP_005566</a>
<b>Locus ID:</b>	4012
<b>UniProt ID:</b>	<a href="#">Q9UIQ6</a>
<b>RefSeq Size:</b>	4470
<b>Cytogenetics:</b>	5q15
<b>RefSeq ORF:</b>	3075
<b>Synonyms:</b>	CAP; IRAP; P-LAP; PLAP
<b>Summary:</b>	This gene encodes a zinc-dependent aminopeptidase that cleaves vasopressin, oxytocin, lys-bradykinin, met-enkephalin, dynorphin A and other peptide hormones. The protein can be secreted in maternal serum, reside in intracellular vesicles with the insulin-responsive glucose transporter GLUT4, or form a type II integral membrane glycoprotein. The protein catalyzes the final step in the conversion of angiotensinogen to angiotensin IV (AT4) and is also a receptor for AT4. Alternative splicing results in multiple transcript variants encoding different isoforms. [provided by RefSeq, Jul 2008]
<b>Protein Families:</b>	Druggable Genome, Protease, Secreted Protein, Transmembrane
<b>Protein Pathways:</b>	Renin-angiotensin system

### Product images:



Coomassie blue staining of purified LNPEP protein (Cat# [TP320692]). The protein was produced from HEK293T cells transfected with LNPEP cDNA clone (Cat# [RC220692]) using MegaTran 2.0 (Cat# [TT210002]).