

Product datasheet for TP320692

Leucyl cystinyl aminopeptidase (LNPEP) (NM_005575) Human Recombinant Protein

Product data:

Product Type:	Recombinant Proteins
Description:	Recombinant protein of human leucyl/cystinyl aminopeptidase (LNPEP), transcript variant 1, 20 µg
Species:	Human
Expression Host:	HEK293T
Expression cDNA Clone or AA Sequence:	>RC220692 representing NM_005575 Red=Cloning site Green=Tags(s)

MEPFTNDRLQLPRNMIENSMFEEEPDVDLAKEPCLHPLEPDEVEYEPGRSRLLRGLGEHEMEEDEEDY
 ESSAKLLGMSFMNRSSGLRNSATGYRQSPDGACSVPSARTMVCAFVIVAVSVIMVIYLLPRCTFTKEG
 CHKKNQSIGLIQPFATNGKLPWAQIRLPTAVVPLRYELSLHPNLTSMTFRGSVTISVQALQVTWNILH
 STGHNISRVTFMSAVSSQEKQAEILEYAYHGQIAIVAPEALLAGHNYTLKIEYSANISSYYGFYGFYSY
 DESNEKKYFAATQFEPLAARSAFPFCFDEPAFKATFIKIIRDEQYALSMPKSSVLDLDDGLVQDEFSE
 SVKMSTYLVAFIVGEMKNLSQDVNGTLVSIYAVPEKIGQVHYALETTVKLEFFQNYFEIQYPLKLDLV
 AIPDFEAGAMENWGLLTFREETLLYDSNTSSMADRKLVTKIIAHELAHQWFGNLVTMKWWNDLWLNAGFA
 TFMEYFSLEKIFKELSSYEDFLDARFKTMKKDSLNSSHPISVVQSSQEQIEMFDSLSYFKGSSLLMLK
 TYLSEDFVQHAVLYLHNHSYASIQSDDLWDSFNEVTNQTLDVKRMMKWTWLQKGFPLVTQKKGKELFI
 QQERFFLNMKPEIQSDTSYLWHIPLSYVTEGRNYSKYQSVSLDDKSGVINLTEEVLWVKVNIINMNGYY
 IVHYADDDWEALIHQLKINPYVLSDKDRANLINNIFELAGLGKVPKRAFDLINYLGNENHTAPITEALF
 QTDLIYNLLEKLGMDLASRLVTRVFKLLQNQIQQTWTDEGTPSMRELSALLEFACTHNLGNCSTTAM
 KLFDDWMASNGTQSLPTDVMTTVFKVGAKTDKGWSFLLGKYISIGSEAENKILEALASSEDVRKLYWLM
 KSSLNGDNFRTQKLSFIIRTVGRHFPGLHLLAWDFVKENWNKLVQKFPGLGYSYTIQNVAGSTYLFSTKTHL
 SEVQAFFENQSEATFRLRCVQEALVLIQWMEKLNKSLTWWL

TRTRPLEQKLISEEDLAANDILDYKDDDDKV

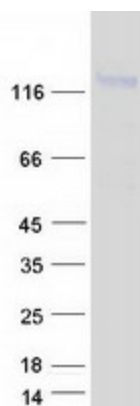
Tag:	C-Myc/DDK
Predicted MW:	117.2 kDa
Concentration:	>0.05 µg/µL as determined by microplate BCA method
Purity:	> 80% as determined by SDS-PAGE and Coomassie blue staining
Buffer:	25 mM Tris-HCl, 100 mM glycine, pH 7.3, 10% glycerol



[View online »](#)

Preparation:	Recombinant protein was captured through anti-DDK affinity column followed by conventional chromatography steps.
Note:	For testing in cell culture applications, please filter before use. Note that you may experience some loss of protein during the filtration process.
Storage:	Store at -80°C.
Stability:	Stable for 12 months from the date of receipt of the product under proper storage and handling conditions. Avoid repeated freeze-thaw cycles.
RefSeq:	NP_005566
Locus ID:	4012
UniProt ID:	Q9UIQ6
RefSeq Size:	4470
Cytogenetics:	5q15
RefSeq ORF:	3075
Synonyms:	CAP; IRAP; P-LAP; PLAP
Summary:	This gene encodes a zinc-dependent aminopeptidase that cleaves vasopressin, oxytocin, lys-bradykinin, met-enkephalin, dynorphin A and other peptide hormones. The protein can be secreted in maternal serum, reside in intracellular vesicles with the insulin-responsive glucose transporter GLUT4, or form a type II integral membrane glycoprotein. The protein catalyzes the final step in the conversion of angiotensinogen to angiotensin IV (AT4) and is also a receptor for AT4. Alternative splicing results in multiple transcript variants encoding different isoforms. [provided by RefSeq, Jul 2008]
Protein Families:	Druggable Genome, Protease, Secreted Protein, Transmembrane
Protein Pathways:	Renin-angiotensin system

Product images:



Coomassie blue staining of purified LNPEP protein (Cat# TP320692). The protein was produced from HEK293T cells transfected with LNPEP cDNA clone (Cat# [RC220692]) using MegaTran 2.0 (Cat# [TT210002]).