

## Product datasheet for **TP320630M**

### **EBF2 (NM\_022659) Human Recombinant Protein**

#### Product data:

**Product Type:** Recombinant Proteins  
**Description:** Purified recombinant protein of Homo sapiens early B-cell factor 2 (EBF2), 100 µg  
**Species:** Human  
**Expression Host:** HEK293T  
**Expression cDNA Clone or AA Sequence:** >RC220630 representing NM\_022659  
**Red**=Cloning site **Green**=Tags(s)

MFGIQDTLGRGPTLKEKSLGAEMDSVRSWVRNVGVVDANVAAQSGVALSRAHFQPPSNLRKSNFFHFV  
LALYDRQQPVEIERTAFVDFVENDKEQGNEKTNNGTHYKLQLLYSNGVRTEQDLYVRLIDSVTKQPIAY  
EGQKNPEMCRVLLTHEVMCSRCEKSKCGNRNETPSDPVIIDRFFLKFFLKCNQCLKTAGNPRDMRRF  
QVVLSTTVNVDGHVLAUSDNMFVHNNSKHGRRARRLDPSEATPCIKAISPSEGWTTGGAMVIIIIGDNFFD  
GLQVVFQTMLVWSELITPHAIRVQTPPRHIPGVVEVTLVSYKSKQFCKGAPGRFIYALNEPTIDYGFQRL  
QKVIPRHPGDPERLAKEMLLKRAADLVEALYGTPHNNQDIILKRAADIAEALYSVPRNPSQLPALSSSPA  
HSGMMGINSYGSQLGVSISESTQGNNQGYIRNTSSISPRGYSSSSTPQQSNYSTSSNSMNGYSNVPMANL  
GVPGSPGFLNGSPTGSPYGMSSSPTVGSSTSSILPFSSSVFPAVKQKSAFAPVIRPQGSPSPACSSGN  
NGFRAMTGLVPPM

**TRTRPLEQKLISEEDLAANDILDYKDDDDKV**

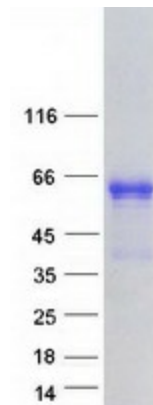
**Tag:** C-Myc/DDK  
**Predicted MW:** 62.5 kDa  
**Concentration:** >0.05 µg/µL as determined by microplate BCA method  
**Purity:** > 80% as determined by SDS-PAGE and Coomassie blue staining  
**Buffer:** 25 mM Tris-HCl, 100 mM glycine, pH 7.3, 10% glycerol  
**Preparation:** Recombinant protein was captured through anti-DDK affinity column followed by conventional chromatography steps.  
**Note:** For testing in cell culture applications, please filter before use. Note that you may experience some loss of protein during the filtration process.  
**Storage:** Store at -80°C.



[View online »](#)

<b>Stability:</b>	Stable for 12 months from the date of receipt of the product under proper storage and handling conditions. Avoid repeated freeze-thaw cycles.
<b>RefSeq:</b>	<a href="#">NP_073150</a>
<b>Locus ID:</b>	64641
<b>UniProt ID:</b>	<a href="#">Q9HAK2</a> , <a href="#">B7Z934</a> , <a href="#">B2RNT0</a>
<b>RefSeq Size:</b>	2297
<b>Cytogenetics:</b>	8p21.2
<b>RefSeq ORF:</b>	1725
<b>Synonyms:</b>	COE2; EBF-2; O/E-3; OE-3
<b>Summary:</b>	The protein encoded by this gene belongs to the COE (Collier/Olf/EBF) family of non-basic, helix-loop-helix transcription factors that have a well conserved DNA binding domain. The COE family proteins play an important role in variety of developmental processes. Studies in mouse suggest that this gene may be involved in the differentiation of osteoblasts. [provided by RefSeq, Oct 2011]

### Product images:



Coomassie blue staining of purified EBF2 protein (Cat# [TP320630]). The protein was produced from HEK293T cells transfected with EBF2 cDNA clone (Cat# [RC220630]) using MegaTran 2.0 (Cat# [TT210002]).