

## Product datasheet for **TP320625L**

### Glucose 6 Phosphate Dehydrogenase (G6PD) (NM\_000402) Human Recombinant Protein

#### Product data:

Product Type:	Recombinant Proteins
Description:	Recombinant protein of human glucose-6-phosphate dehydrogenase (G6PD), transcript variant 1, 1 mg
Species:	Human
Expression Host:	HEK293T
Expression cDNA Clone or AA Sequence:	>RC220625 representing NM_000402 <b>Red</b> =Cloning site <b>Green</b> =Tags(s)

MGRRGSAPGNRTRLRGCERGGRRRRSADSVMAEQVALSRTQVCGILREELFQGD AFHQSDTHIFIIMGAS  
GDLAKKKIYPTIWWLFRDGLLPENTFIVGYARSRLTVADIRKQSEPFKATPEEKLKLEDFFARNSYVAG  
QYDDAASYQRLNSHMNALHLGSQANRLFYLALPPTVYEAVTKNIHESCMSQIGWNRIIVEKPFGRDLQSS  
DRLSNHISLRFREDQIYRIDHYLGKEMVQNLMLVRFANRIFGPIWNRDNIACVILTFKEPFGEGRGGYF  
DEFGIIRDVMQNHLLQMLCLVAMEKPASTNSDDVRDEKVKVLCISEVQANNVVLGQYVGNPDGEGEATK  
GYLDDPTVPRGSTTATFAAVLYVENERWDGVPFILRCGKALNERKAEVRLQFHDVAGDIFHQQCKRNEL  
VIRVQPNEAVYTKMMTKKPGMFFNPEESELDTYGNRYKNVKLPDAYERLILDVFCGSQMHFVRSDELRE  
AWRIFTP LLHQIELEKPKPIPIYIGSRGPTEADELMKRVGFQYEGTYKWWNPHKL

**TRTRPLEQKLISEEDLAANDILDYKDDDDKV**

Tag:	C-Myc/DDK
Predicted MW:	62.3 kDa
Concentration:	>0.05 µg/µL as determined by microplate BCA method
Purity:	> 80% as determined by SDS-PAGE and Coomassie blue staining
Buffer:	25 mM Tris-HCl, 100 mM glycine, pH 7.3, 10% glycerol
Bioactivity:	Acetylation substrate (PMID: <a href="#">27356773</a> )
Preparation:	Recombinant protein was captured through anti-DDK affinity column followed by conventional chromatography steps.
Note:	For testing in cell culture applications, please filter before use. Note that you may experience some loss of protein during the filtration process.
Storage:	Store at -80°C.



[View online >](#)

**Stability:** Stable for 12 months from the date of receipt of the product under proper storage and handling conditions. Avoid repeated freeze-thaw cycles.

**RefSeq:** [NP\\_000393](#)

**Locus ID:** 2539

**UniProt ID:** [P11413](#)

**RefSeq Size:** 2395

**Cytogenetics:** Xq28

**RefSeq ORF:** 1635

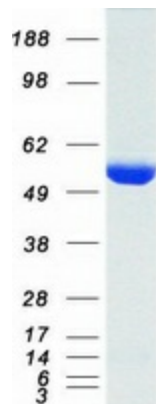
**Synonyms:** G6PD1

**Summary:** This gene encodes glucose-6-phosphate dehydrogenase. This protein is a cytosolic enzyme encoded by a housekeeping X-linked gene whose main function is to produce NADPH, a key electron donor in the defense against oxidizing agents and in reductive biosynthetic reactions. G6PD is remarkable for its genetic diversity. Many variants of G6PD, mostly produced from missense mutations, have been described with wide ranging levels of enzyme activity and associated clinical symptoms. G6PD deficiency may cause neonatal jaundice, acute hemolysis, or severe chronic non-spherocytic hemolytic anemia. Two transcript variants encoding different isoforms have been found for this gene. [provided by RefSeq, Jul 2008]

**Protein Families:** Druggable Genome

**Protein Pathways:** Glutathione metabolism, Metabolic pathways, Pentose phosphate pathway

### Product images:



Coomassie blue staining of purified G6PD protein (Cat# [TP320625]). The protein was produced from HEK293T cells transfected with G6PD cDNA clone (Cat# [RC220625]) using MegaTran 2.0 (Cat# [TT210002]).