

Product datasheet for TP320622M

CPVL (NM_019029) Human Recombinant Protein

Product data:

| | |
|---------------------------------------|---|
| Product Type: | Recombinant Proteins |
| Description: | Recombinant protein of human carboxypeptidase, vitellogenic-like (CPVL), transcript variant 2, 100 µg |
| Species: | Human |
| Expression Host: | HEK293T |
| Expression cDNA Clone or AA Sequence: | >RC220622 protein sequence Red =Cloning site Green =Tags(s) |

MVGAMWKVIVSLVLLMPGPCDGLFRSLYRSVSMPPKGDGSGQPLFLTPYIEAGKIQKGRELSLVGPPFGLN
MKS YAGFLT VNKTYNSNLFFWFFPAQIQPEDAPVWLWLQGGPGGSSMFGFLVEHGPIYVTSNMTLRDRDF
PWT T T L S M L Y I D N P V G T G F S F T D D T H G Y A V N E D D V A R D L Y S A L I Q F F Q I F P E Y K N N D F Y V T G E S Y A G K Y V
P A I A H L I H S L N P V R E V K I N L N G I A I G D G Y S D P E S I I G G Y A E F L Y Q I G L L D E K Q K K Y F Q K Q C H E C I E H I R K
Q N W F E A F E I L D K L L D G D L T S D P S Y F Q N V T G C S N Y N F L R C T E P E D Q L Y Y V K F L S L P E V R Q A I H V G N Q T F N
D G T I V E K Y L R E D T V Q S V K P W L T E I M N N Y K V L I Y N G Q L D I I V A A A L T E R S L M G M D W K G S Q E Y K K A E K K V W K
I F K S D S E V A G Y I R Q V G D F H Q V I I R G G G H I L P Y D Q P L R A F D M I N R F I Y G K G W D P Y V G

TRTRPLEQKLISEEDLAANDILDYKDDDDKV

| | |
|----------------|--|
| Tag: | C-Myc/DDK |
| Predicted MW: | 54 kDa |
| Concentration: | >0.05 µg/µL as determined by microplate BCA method |
| Purity: | > 80% as determined by SDS-PAGE and Coomassie blue staining |
| Buffer: | 25 mM Tris-HCl, 100 mM glycine, pH 7.3, 10% glycerol |
| Preparation: | Recombinant protein was captured through anti-DDK affinity column followed by conventional chromatography steps. |
| Note: | For testing in cell culture applications, please filter before use. Note that you may experience some loss of protein during the filtration process. |
| Storage: | Store at -80°C. |
| Stability: | Stable for 12 months from the date of receipt of the product under proper storage and handling conditions. Avoid repeated freeze-thaw cycles. |



[View online »](#)

RefSeq: [NP_061902](#)

Locus ID: 54504

UniProt ID: [Q9H3G5](#), [A0A024RA40](#)

RefSeq Size: 1779

Cytogenetics: 7p14.3

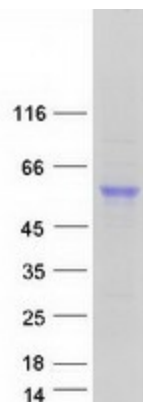
RefSeq ORF: 1428

Synonyms: HVLP

Summary: The protein encoded by this gene is a carboxypeptidase and bears strong sequence similarity to serine carboxypeptidases. Carboxypeptidases are a large class of proteases that act to cleave a single amino acid from the carboxy termini of proteins or peptides. The exact function of this protein, however, has not been determined. [provided by RefSeq, Jan 2017]

Protein Families: Druggable Genome, Protease

Product images:



Coomassie blue staining of purified CPVL protein (Cat# [TP320622]). The protein was produced from HEK293T cells transfected with CPVL cDNA clone (Cat# [RC220622]) using MegaTran 2.0 (Cat# [TT210002]).