

Product datasheet for **TP320614L**

ARHGAP22 (NM_021226) Human Recombinant Protein

Product data:

Product Type:	Recombinant Proteins
Description:	Purified recombinant protein of Homo sapiens Rho GTPase activating protein 22 (ARHGAP22), 1 mg
Species:	Human
Expression Host:	HEK293T
Expression cDNA	>RC220614 representing NM_021226
Clone or AA Sequence:	Red=Cloning site Green=Tags(s)

MLSPKIRQARRARSKSLVMGEQSRSPGRMPCPHRLGPVLKAGWLKKQRSIMKNWQQRWFVLRGDQLFYK
DKDEIKPQGFISLQGTQVTELPPEGDPGKHLFEISPGGAGEREKVPANPEALLLMASSQRDMEDWVQAI
RRVIWAPLGGGIFGQRLEETVHHERKYGPRLAPLLVEQCVDIFIRERGLTEEGLFRMPGQANLVRDLQDSF
DCGEKPLFDSTTDVHTVASLLKLYLRELPEPVVPFARYEDFLSQAQLLTKDEGEGTLELAKQVSNLPQAN
YNLLRYICKFLDEVQAYSNNKMSVQNLATVFGPNILRPQVEDPVTIMEGTSLVQHLMTVLIRKHSQLFT
APVPEGPTSPRGGLQCAVGWGSEEVTRDSQGEPPGGLPAHRTSSLDGAAVAVLSRTAPTGPGRSRSRCPGK
KVQTLPSWKSSFRQPRSLSGSPKGGSSLEVPIISSGGNWMLMNGLSLGRHRRASSGDRLKDSGVSQRLS
TYDNVPAPGLVPGIPSVASMAWSGASSSESSVGGSLSSCTACRASDSSARSSLHTDWALEPSPLPSSSED
PKSLDLHSMDEAGAGASNSEPSPTREHARRSEALQGLVTELRALCRQTEYERSVKRIEESGAD
LRKRMSRLEEELDQEKKKYIMLEIKLRNSERAREDAERRNQLLQREMEEFFSTLGSGLTVGAKGARAPK

TRTRPLEQKLISEEDLAANDILDYKDDDDKV

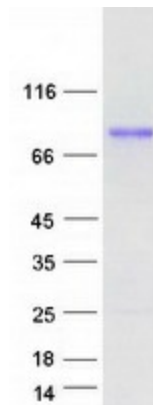
Tag:	C-Myc/DDK
Predicted MW:	76.6 kDa
Concentration:	>0.05 µg/µL as determined by microplate BCA method
Purity:	> 80% as determined by SDS-PAGE and Coomassie blue staining
Buffer:	25 mM Tris-HCl, 100 mM glycine, pH 7.3, 10% glycerol
Preparation:	Recombinant protein was captured through anti-DDK affinity column followed by conventional chromatography steps.
Note:	For testing in cell culture applications, please filter before use. Note that you may experience some loss of protein during the filtration process.
Storage:	Store at -80°C.



[View online »](#)

Stability:	Stable for 12 months from the date of receipt of the product under proper storage and handling conditions. Avoid repeated freeze-thaw cycles.
RefSeq:	NP_067049
Locus ID:	58504
UniProt ID:	Q7Z5H3
RefSeq Size:	2775
Cytogenetics:	10q11.22-q11.23
RefSeq ORF:	2094
Synonyms:	RhoGAP2; RhoGap22
Summary:	This gene encodes a member of the GTPase activating protein family which activates a GTPase belonging to the RAS superfamily of small GTP-binding proteins. The encoded protein is insulin-responsive, is dependent on the kinase Akt and requires the Akt-dependent 14-3-3 binding protein which binds sequentially to two serine residues. The result of these interactions is regulation of cell motility. Multiple transcript variants encoding different isoforms have been found for this gene. [provided by RefSeq, Dec 2011]

Product images:



Coomassie blue staining of purified ARHGAP22 protein (Cat# [TP320614]). The protein was produced from HEK293T cells transfected with ARHGAP22 cDNA clone (Cat# [RC220614]) using MegaTran 2.0 (Cat# [TT210002]).