

Product datasheet for **TP320607M**

GM CSF Receptor alpha (CSF2RA) (NM_172247) Human Recombinant Protein

Product data:

| | |
|---------------------------------------|--|
| Product Type: | Recombinant Proteins |
| Description: | Recombinant protein of human colony stimulating factor 2 receptor, alpha, low-affinity (granulocyte-macrophage) (CSF2RA), transcript variant 4, 100 µg |
| Species: | Human |
| Expression Host: | HEK293T |
| Expression cDNA Clone or AA Sequence: | >RC220607 representing NM_172247 Red =Cloning site Green =Tags(s) |

MLLLVTSLLLCELPHPAFLLIPEKSDLRTVAPASSLNVRFDSTMTNLSWDCQENTTFKSCFLTDKKNRV
EPRLSNNECSCTFREICLHEGVTFEVHVNTSQRGFQKLLYPNSGREGTAAQNFSCFIYNADLMNCTWAR
GPTAPRDVQYFLYIRNSKRRREIRCPYYIQDSGTHVGCILDNLGSLTSRNYFLVNGTSREIGIQFFDSLL
DTKKIERFNPPSNVTVRCNTHCLVRWKQPRTYQKLSYLDYFQYQLDVHRKNTQPGTENLLINVSGDLENR
YNFPSSEPRAKHSVKIRAADVRLNWSSWSEAIEFGSLGYSGCSRQFHRSKTN

TRTRPLEQKLISEEDLAANDILDYKDDDDKV

| | |
|----------------|--|
| Tag: | C-Myc/DDK |
| Predicted MW: | 36.3 kDa |
| Concentration: | >0.05 µg/µL as determined by microplate BCA method |
| Purity: | > 80% as determined by SDS-PAGE and Coomassie blue staining |
| Buffer: | 25 mM Tris-HCl, 100 mM glycine, pH 7.3, 10% glycerol |
| Preparation: | Recombinant protein was captured through anti-DDK affinity column followed by conventional chromatography steps. |
| Note: | For testing in cell culture applications, please filter before use. Note that you may experience some loss of protein during the filtration process. |
| Storage: | Store at -80°C. |
| Stability: | Stable for 12 months from the date of receipt of the product under proper storage and handling conditions. Avoid repeated freeze-thaw cycles. |
| RefSeq: | <u>NP_758450</u> |
| Locus ID: | 1438 |



[View online »](#)

UniProt ID: [P15509](#)

RefSeq Size: 1587

Cytogenetics: X;Y

RefSeq ORF: 999

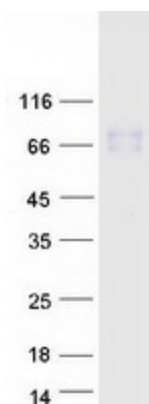
Synonyms: alphaGMR; CD116; CDw116; CSF2R; CSF2RAX; CSF2RAY; CSF2RX; CSF2RY; GM-CSF-R-alpha; GMCSFR; GMCSFR-alpha; GMR; GMR-alpha; SMDP4

Summary: The protein encoded by this gene is the alpha subunit of the heterodimeric receptor for colony stimulating factor 2, a cytokine which controls the production, differentiation, and function of granulocytes and macrophages. The encoded protein is a member of the cytokine family of receptors. This gene is found in the pseudoautosomal region (PAR) of the X and Y chromosomes. Multiple transcript variants encoding different isoforms have been found for this gene, with some of the isoforms being membrane-bound and others being soluble. [provided by RefSeq, Jul 2008]

Protein Families: Druggable Genome, Secreted Protein, Transmembrane

Protein Pathways: Cytokine-cytokine receptor interaction, Hematopoietic cell lineage, Jak-STAT signaling pathway, Pathways in cancer

Product images:



Coomassie blue staining of purified CSF2RA protein (Cat# [TP320607]). The protein was produced from HEK293T cells transfected with CSF2RA cDNA clone (Cat# [RC220607]) using MegaTran 2.0 (Cat# [TT210002]).