

## Product datasheet for **TP320579L**

### WDR42A (DCAF8) (NM\_015726) Human Recombinant Protein

#### Product data:

**Product Type:** Recombinant Proteins

**Description:** Recombinant protein of human WD repeat domain 42A (WDR42A), 1 mg

**Species:** Human

**Expression Host:** HEK293T

**Expression cDNA Clone or AA Sequence:** >RC220579 protein sequence  
**Red**=Cloning site **Green**=Tags(s)

MSSKGSSTDGRTDLANGSLSSSPEEMSGAEEGRETSSGIEVEASDLSLSLTGDDGGPNRTSTESRGTDTE  
SSGEDKSDSDMEDTGHYSINDENRVHNRSEEEEEEEEEEEQPRRRVQRKRANRDQDSSDDERALEDWV  
SSETSALPRPRWQALPALRERELGSSARFVYEACGARVFVQRFLQHGLEGHTGCVNTLHFNQRGTWLAS  
GSDDLKVVWDWVRRQPVLDVFESGHKSNVFQAKFLPNSGDSTLAMCARDGQVRVAELSATQCCKNTKR  
VA  
QHKGASHKLALPDSPCTFLSAGEDAVVFTIDLRQDRPASKLVVTKEKEKKVGLYTIYVNPANTHQFAVG  
GRDQFVRIYDQRKIDENENNGVLKKFCPHHLVNSESKANITCLVYSHDGTELLASYNDEDIYLFNSSHSD  
GAQYVKRYKGHRNNATVKGVNFGPKSEFVSGSDCGHIFLWEKSSCQIIQFMEGDKGGVNCLEPHPH  
L  
PVLATSGLDHDVKIWAPTAEAESTELTGLKDVIKKNKRERDEDSLHQTDLFDHMLWFLMHHLRQRRHHR  
R  
WREPGVGATDADSDSPSSSDTSDEEEGPDRVQCMPS

**TRTRPLEQKLISEEDLAANDILDYKDDDDKV**

**Tag:** C-Myc/DDK

**Predicted MW:** 66.7 kDa

**Concentration:** >0.05 µg/µL as determined by microplate BCA method

**Purity:** > 80% as determined by SDS-PAGE and Coomassie blue staining

**Buffer:** 25 mM Tris-HCl, 100 mM glycine, pH 7.3, 10% glycerol

**Preparation:** Recombinant protein was captured through anti-DDK affinity column followed by conventional chromatography steps.

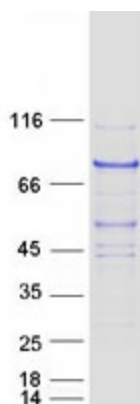
**Note:** For testing in cell culture applications, please filter before use. Note that you may experience some loss of protein during the filtration process.



[View online »](#)

<b>Storage:</b>	Store at -80°C.
<b>Stability:</b>	Stable for 12 months from the date of receipt of the product under proper storage and handling conditions. Avoid repeated freeze-thaw cycles.
<b>RefSeq:</b>	<a href="#">NP_056541</a>
<b>Locus ID:</b>	50717
<b>UniProt ID:</b>	<a href="#">Q5TAQ9</a>
<b>RefSeq Size:</b>	3901
<b>Cytogenetics:</b>	1q23.2
<b>RefSeq ORF:</b>	1791
<b>Synonyms:</b>	GAN2; H326; WDR42A
<b>Summary:</b>	This gene encodes a WD repeat-containing protein that interacts with the Cul4-Ddb1 E3 ligase macromolecular complex. Multiple alternatively spliced transcript variants have been found for this gene. [provided by RefSeq, Jul 2009]

### Product images:



Coomassie blue staining of purified DCAF8 protein (Cat# [TP320579]). The protein was produced from HEK293T cells transfected with DCAF8 cDNA clone (Cat# [RC220579]) using MegaTran 2.0 (Cat# [TT210002]).