

## Product datasheet for TP320559

### BARHL1 (NM\_020064) Human Recombinant Protein

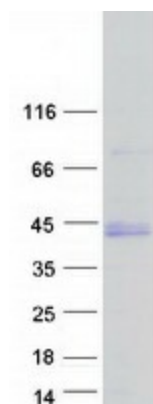
#### Product data:

Product Type:	Recombinant Proteins
Description:	Recombinant protein of human BarH-like homeobox 1 (BARHL1), 20 µg
Species:	Human
Expression Host:	HEK293T
Expression cDNA Clone or AA Sequence:	>RC220559 representing NM_020064 <b>Red</b> =Cloning site <b>Green</b> =Tags(s)
	MEGSNGFGIDSILSHRAGSPALPKGDPLLGDCRSPELSPRESSSDCSSPASPGRDCLETGTTPRPGGAS GPGLDShLQPGQLSAPAQSRTVTSSFLIRDILADCKPLAACAPYSSSGQPAPEPGGRLAAKAAEDFRDK LDKSGSNASSDSEYKVKEEGDREISSSRDPPVRLKKPRKARTAFDTHQLAQLERSFERQKYLVSQDRME LAASLNLTDTQVKTWYQNRRTKWKQRQTAVGLELLAEAGNYSALQRMFSPYFYPQSLVSNLDPGAALYLY RGPSAPPPALQRPLVPRILIHGLQGASEPPPLPPLAGVLPRAAQPR
	<b>TRTRPLEQKLISEEDLAANDILDYKDDDDKV</b>
Tag:	C-Myc/DDK
Predicted MW:	34.9 kDa
Concentration:	>0.05 µg/µL as determined by microplate BCA method
Purity:	> 80% as determined by SDS-PAGE and Coomassie blue staining
Buffer:	25 mM Tris-HCl, 100 mM glycine, pH 7.3, 10% glycerol
Preparation:	Recombinant protein was captured through anti-DDK affinity column followed by conventional chromatography steps.
Note:	For testing in cell culture applications, please filter before use. Note that you may experience some loss of protein during the filtration process.
Storage:	Store at -80°C.
Stability:	Stable for 12 months from the date of receipt of the product under proper storage and handling conditions. Avoid repeated freeze-thaw cycles.
RefSeq:	<a href="#">NP_064448</a>
Locus ID:	56751



[View online »](#)

UniProt ID: [Q9BZE3](#)  
RefSeq Size: 1907  
Cytogenetics: 9q34.13  
RefSeq ORF: 981  
Protein Families: Transcription Factors

**Product images:**

Coomassie blue staining of purified BARHL1 protein (Cat# TP320559). The protein was produced from HEK293T cells transfected with BARHL1 cDNA clone (Cat# [RC220559]) using MegaTran 2.0 (Cat# [TT210002]).