

## Product datasheet for **TP320555L**

### Osteocalcin (BGLAP) (NM\_199173) Human Recombinant Protein

#### Product data:

Product Type:	Recombinant Proteins
Description:	Recombinant protein of human bone gamma-carboxyglutamate (gla) protein (BGLAP), 1 mg
Species:	Human
Expression Host:	HEK293T
Expression cDNA Clone or AA Sequence:	>RC220555 representing NM_199173 <b>Red</b> =Cloning site <b>Green</b> =Tags(s)  MRALTLALLALAALCIAGQAGAKPSGAESSKGAAFVSKQEGSEVVKRPRRYLYQWLGAPVPYPDPLEPR REVCELNPDCDELADHIGFQEAYRRFYGPV  <b>TRTRPLEQKLISEEDLAANDILDYKDDDDKV</b>
Tag:	C-Myc/DDK
Predicted MW:	8.7 kDa
Concentration:	>0.05 µg/µL as determined by microplate BCA method
Purity:	> 80% as determined by SDS-PAGE and Coomassie blue staining
Buffer:	25 mM Tris-HCl, 100 mM glycine, pH 7.3, 10% glycerol
Preparation:	Recombinant protein was captured through anti-DDK affinity column followed by conventional chromatography steps.
Note:	For testing in cell culture applications, please filter before use. Note that you may experience some loss of protein during the filtration process.
Storage:	Store at -80°C.
Stability:	Stable for 12 months from the date of receipt of the product under proper storage and handling conditions. Avoid repeated freeze-thaw cycles.
RefSeq:	<a href="#">NP_954642</a>
Locus ID:	632
UniProt ID:	<a href="#">P02818</a>
RefSeq Size:	498
Cytogenetics:	1q22



[View online »](#)

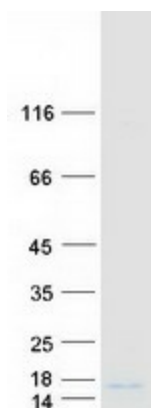
RefSeq ORF: 300

Synonyms: BGP; OC; OCN

**Summary:** This gene encodes a highly abundant bone protein secreted by osteoblasts that regulates bone remodeling and energy metabolism. The encoded protein contains a Gla (gamma carboxyglutamate) domain, which functions in binding to calcium and hydroxyapatite, the mineral component of bone. Serum osteocalcin levels may be negatively correlated with metabolic syndrome. Read-through transcription exists between this gene and the neighboring upstream gene, PMF1 (polyamine-modulated factor 1), but the encoded protein only shows sequence identity with the upstream gene product. [provided by RefSeq, Jun 2015]

**Protein Families:** ES Cell Differentiation/IPS, Secreted Protein

### Product images:



Coomassie blue staining of purified BGLAP protein (Cat# [TP320555]). The protein was produced from HEK293T cells transfected with BGLAP cDNA clone (Cat# [RC220555]) using MegaTran 2.0 (Cat# [TT210002]).