

Product datasheet for **TP320552M**

RIT1 (NM_006912) Human Recombinant Protein

Product data:

Product Type: Recombinant Proteins

Description: Recombinant protein of human Ras-like without CAAX 1 (RIT1), 100 µg

Species: Human

Expression Host: HEK293T

Expression cDNA Clone
or AA Sequence: >RC220552 protein sequence
Red=Cloning site **Green**=Tags(s)

MDSGTRPVGSCSSPAGLSREYKLVMLGAGGVGKSAMTMQFISHRFPEDHDPTIEDAYKIRIRIDDEPAN
LDILDTAGQAEFTAMRDQYMRAGEGFIICYSITDRRSFHEVREFKQLIYRVRTDDTPWVLVGNKSDLKQ
LRQVTKEEGLALAREFSCPFETSAAYRYIIDDVHALVREIRRKEKEAVLAMEKKSCKPNSVWKRLLKSP
FRKKKDSVT

TRTRPLEQKLISEEDLAANDILDYKDDDDKV

Tag: C-Myc/DDK

Predicted MW: 25 kDa

Concentration: >0.05 µg/µL as determined by microplate BCA method

Purity: > 80% as determined by SDS-PAGE and Coomassie blue staining

Buffer: 25 mM Tris-HCl, 100 mM glycine, pH 7.3, 10% glycerol

Preparation: Recombinant protein was captured through anti-DDK affinity column followed by conventional chromatography steps.

Note: For testing in cell culture applications, please filter before use. Note that you may experience some loss of protein during the filtration process.

Storage: Store at -80°C.

Stability: Stable for 12 months from the date of receipt of the product under proper storage and handling conditions. Avoid repeated freeze-thaw cycles.

RefSeq: [NP_008843](#)

Locus ID: 6016

UniProt ID: [Q92963](#)



[View online »](#)

RefSeq Size: 3455

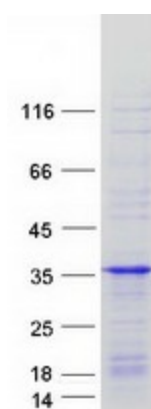
Cytogenetics: 1q22

RefSeq ORF: 657

Synonyms: NS8; RIBB; RIT; ROC1

Summary: This gene encodes a member of a subfamily of Ras-related GTPases. The encoded protein is involved in regulating p38 MAPK-dependent signaling cascades related to cellular stress. This protein also cooperates with nerve growth factor to promote neuronal development and regeneration. Alternate splicing results in multiple transcript variants. [provided by RefSeq, Feb 2012]

Product images:



Coomassie blue staining of purified RIT1 protein (Cat# [TP320552]). The protein was produced from HEK293T cells transfected with RIT1 cDNA clone (Cat# [RC220552]) using MegaTran 2.0 (Cat# [TT210002]).