

## Product datasheet for **TP320552**

### RIT1 (NM\_006912) Human Recombinant Protein

#### Product data:

**Product Type:** Recombinant Proteins

**Description:** Recombinant protein of human Ras-like without CAAX 1 (RIT1), 20 µg

**Species:** Human

**Expression Host:** HEK293T

**Expression cDNA Clone or AA Sequence:** >RC220552 protein sequence  
**Red**=Cloning site **Green**=Tags(s)

MDSGTRPVGSCCSSPAGLSREYKLVMLGAGGVGKSAMTMQFISHRFPEDHDPTIEDAYKIRIRIDDEPAN  
LDILDTAGQAEFTAMRDQYMRAGEGFIICYSITDRRSFHEVREFKQLIYRVRTDDTPVVLVGNKSDLKQ  
LRQVTKEEGLALAREFSCPFSETSAAAYRYIIDDVHFHALVREIRRKEKEAVLAMEKSKPKNSVWKRLKSP  
FRKKKDSVT

**TRTRPLEQKLISEEDLAANDILDYKDDDDKV**

**Tag:** C-Myc/DDK

**Predicted MW:** 25 kDa

**Concentration:** >0.05 µg/µL as determined by microplate BCA method

**Purity:** > 80% as determined by SDS-PAGE and Coomassie blue staining

**Buffer:** 25 mM Tris-HCl, 100 mM glycine, pH 7.3, 10% glycerol

**Preparation:** Recombinant protein was captured through anti-DDK affinity column followed by conventional chromatography steps.

**Note:** For testing in cell culture applications, please filter before use. Note that you may experience some loss of protein during the filtration process.

**Storage:** Store at -80°C.

**Stability:** Stable for 12 months from the date of receipt of the product under proper storage and handling conditions. Avoid repeated freeze-thaw cycles.

**RefSeq:** [NP\\_008843](#)

**Locus ID:** 6016

**UniProt ID:** [Q92963](#)



[View online »](#)

RefSeq Size: 3455

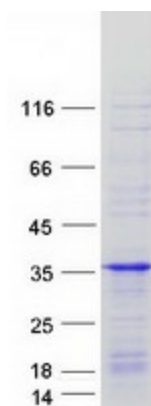
Cytogenetics: 1q22

RefSeq ORF: 657

Synonyms: NS8; RIBB; RIT; ROC1

**Summary:** This gene encodes a member of a subfamily of Ras-related GTPases. The encoded protein is involved in regulating p38 MAPK-dependent signaling cascades related to cellular stress. This protein also cooperates with nerve growth factor to promote neuronal development and regeneration. Alternate splicing results in multiple transcript variants. [provided by RefSeq, Feb 2012]

### Product images:



Coomassie blue staining of purified RIT1 protein (Cat# TP320552). The protein was produced from HEK293T cells transfected with RIT1 cDNA clone (Cat# [RC220552]) using MegaTran 2.0 (Cat# [TT210002]).