

Product datasheet for **TP320541M**

Integrin beta 4 (ITGB4) (NM_000213) Human Recombinant Protein

Product data:

Product Type: Recombinant Proteins

Description: Purified recombinant protein of Homo sapiens integrin, beta 4 (ITGB4), transcript variant 1, 100 µg

Species: Human

Expression Host: HEK293T



[View online »](#)

Expression cDNA Clone >RC220541 representing NM_000213
or AA Sequence: Red=Cloning site Green=Tags(s)

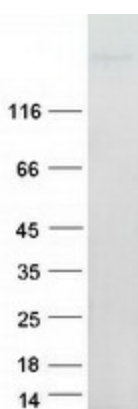
MAGPRPSPWARLLLAALISVLSGLANRCKKAPVKSCTECVRVDKDCAYCTDEMFRDRRCNTQAELLAAGCQRESIVMESSFQITEETQIDITTLRRSQMSPQGLRVRLRPGEERHFELEVFEPLESPVDLYILMDFSN SMSDDLNLKMGQNLARVLSQLTSDYTIGFGKFVDKVSVPQTDMRPEKLKEPWPNSDPPFSFKNVISLTEDVDEFRNKLQGERISGNLDAPEGGFDAILQTAVCTRDIGWRPDSTHLLVFSTESAFHYEADGANVLAGIMSRNDRCHLDTTGTYTQYRTQDYPSVPTLVRLAKHNIPIFAVTNYSYSYKELHTYFPVSSLGVLQEDSSNIVELLEAFNRIRSNLDIRALDSPRGLRTEVTSKMFQKTRTGSFHIRRGEVGIYQVQLRALEHVDGTHVCQLPEDQKGNHILKPSFSDGLKMDAGIICDVCTCELQKEVRSARCSFNGDFVCGQCVCSEGWSGQTCNCSTGSLSDIQPCLREGEDKPCSGRGECQCGHCVCYEGEGRYEQFCEYDNFQCPRTSGFLCNDRGRCSMGQCVCEPGWTGPSCDCPLSNATCIDSNGGICNGRGHCCEGRCHCHQQSLYTDITICEINYSIAHPGLCEDLRSCVQCQAWGTGEKKGRTCEECNFKVKMVDLKRAEVVRCSFRDEDDCTYSYTMEDGAPGNSTVLVHKKKDCPPGSFVWLIPLLLLLLPLLLLLLWYKACCKACLALLPCCNRGHMVGFKEDHYMLRENLMASDHLDTPMLRSGNLKGRDVRWKVTNNMQRPGFATHAASINPTLVYGLSLRLARLCTENLLKPDTRCAQLRQEVEENLNEVYRQISGVHKLQQTFRQPNAGKKQDHTIVDTVLMAPRSAKPALLKLTKEQVEQRAFHDLVKVPAGYYTLTADQDARGMVEFQEGVELVDVRVPLFIRPEDDDEKQLLVEAIDVPAGTATLGRRLVNITIIEQARDVVSFEQPEFSVSRGDQVARIPVIRRVLDGGKSQVSYRTQDGTAGQNRDYIPVEGELLFQPGAWEKELQVKLLELQEVDSLLRGRQVRRFHVQLSNPKFGAHLGQPHSTTIIIRDPELDRSFTSQMLSSQPPPHGDLGAPQNPNAKAAGSRKIHFNWLPSPGKPMGYRVKYWIQGDSESEAHLLDSKVPSVELTNLYPYCDYEMKVCAYGAQEGEPYSSLVSCRTHQEVPEPGRLAFNVVSVSTVQLSWAEPATNGEITAYEVCYGLVNDNRPPIGPMKKVLVDNPKNRMLLIENLRESQPYRYTVKARNGAGWGPEREAIINLATQPKRPMSIPIPDIPVDAQSGEDYDSFLMYSDDVLRSPSGSQRPSVSDDTGCGWKFEPLLGEELDRLRRVTWRLPPELIPRLSASSGRSSDAEAPHGPPDDGGAGGKGGSLPRSATPGPPGEHLVNGRMDFAFPGSTNSLHRMTTTSAAAYGTHLSPHVPHRVLTSSSTLTRDYNLSTRSEHSHSTTLXRDYSTLTSVSSHDSRLTAGVPDTPTRLVFSALGPTSLRVSWQEPRCERPLQGYSVEYQLLNGGELHRLNIPNPAQTSVVVEDLLPNHSYVFRVRAQSQEGWGREGVTIESQVHPQSPCLPLPGSAFTLSTPSAPGPLVFTALSPDSLQLSWERPRRPNGDIVGLVTCEMAQGGGPATAFRVDGDSPE SRLTVPGLSENVYPYKFKVQARTTEGFGPEREGITIESQDGGPFPLGSRAGLFQHPLQSEYSSITTTHTSATEPFLVDGPTLGAQHLEAGGSLTRHVTQEFVSRTLTSGLTSTHMDQQFFPT

TRTRPLEQKLISEEDLAANDILDYKDDDDKV

- Tag:** C-Myc/DDK
- Predicted MW:** 199.4 kDa
- Concentration:** >0.05 µg/µL as determined by microplate BCA method
- Purity:** > 80% as determined by SDS-PAGE and Coomassie blue staining
- Buffer:** 25 mM Tris-HCl, 100 mM glycine, pH 7.3, 10% glycerol
- Preparation:** Recombinant protein was captured through anti-DDK affinity column followed by conventional chromatography steps.
- Note:** For testing in cell culture applications, please filter before use. Note that you may experience some loss of protein during the filtration process.

Storage:	Store at -80°C.
Stability:	Stable for 12 months from the date of receipt of the product under proper storage and handling conditions. Avoid repeated freeze-thaw cycles.
RefSeq:	<u>NP_000204</u>
Locus ID:	3691
UniProt ID:	<u>P16144, A0A024R8T0</u>
RefSeq Size:	5925
Cytogenetics:	17q25.1
RefSeq ORF:	5466
Synonyms:	CD104; GP150
Summary:	<p>Integrins are heterodimers comprised of alpha and beta subunits, that are noncovalently associated transmembrane glycoprotein receptors. Different combinations of alpha and beta polypeptides form complexes that vary in their ligand-binding specificities. Integrins mediate cell-matrix or cell-cell adhesion, and transduced signals that regulate gene expression and cell growth. This gene encodes the integrin beta 4 subunit, a receptor for the laminins. This subunit tends to associate with alpha 6 subunit and is likely to play a pivotal role in the biology of invasive carcinoma. Mutations in this gene are associated with epidermolysis bullosa with pyloric atresia. Multiple alternatively spliced transcript variants encoding distinct isoforms have been found for this gene. [provided by RefSeq, Jul 2008]</p>
Protein Families:	Druggable Genome
Protein Pathways:	Arrhythmogenic right ventricular cardiomyopathy (ARVC), Dilated cardiomyopathy, ECM-receptor interaction, Focal adhesion, Hypertrophic cardiomyopathy (HCM), Regulation of actin cytoskeleton

Product images:



Coomassie blue staining of purified ITGB4 protein (Cat# [TP320541]). The protein was produced from HEK293T cells transfected with ITGB4 cDNA clone (Cat# [RC220541]) using MegaTran 2.0 (Cat# [TT210002]).