

Product datasheet for **TP320535**

COL23A1 (NM_173465) Human Recombinant Protein

Product data:

Product Type: Recombinant Proteins

Description: Recombinant protein of human collagen, type XXIII, alpha 1 (COL23A1), 20 µg

Species: Human

Expression Host: HEK293T

Expression cDNA >RC220535 representing NM_173465

Clone or AA Red=Cloning site Green=Tags(s)

Sequence:

MGPGERAGGGGDAGKGNAAGGGGGGRSATTAGSRAVSALCLLLSVGSAAACLLLGVQAAALQGRVAALEE
ERELLRRAGPPGALDAWAEPHLERLLREKLDGLAKIRTAREAPSECVCPPGPPGRRGKPGRRGDPGPPGQ
SGRDGYPGPLGLDGKPLPGPKGEKGAPGDFGPRGDQGDGAAGPPGPPGPPGARGPPGDTGKDGPARGAQ
GPAGPKGEPGQDGEMGPKGPPGPKGEPGVPKKGDDGTPSQPGPPGPKGEPGSMGPRGENGVDPGAPGPKG
EPGHRGTDGAAGPRGAPGLKGEQGDVVIDYDGRILDALKGPPGPQPPGPPGIPGAKGELGLPGAPGID
GEKGPKGQKGDGPGEPPAGLKEAGEMGLSGLPGADGLKGEKGESASDSLQESLAQLIVEGPPGPPGPP
GPMGLQGIQGPKGLDGAKGEKGASGERGPSGLPGVPVGLIGLPGTKGEKGRPGEPGLDGFPPRGEKG
DRSERGEKGERGVPGRKGVKQKGEPPGLDQPCVGPDPGLPVPGCWHK

TRTRPLEQKLISEEDLAANDILDYKDDDDKV

Tag: C-Myc/DDK

Predicted MW: 51.8 kDa

Concentration: >0.05 µg/µL as determined by microplate BCA method

Purity: > 80% as determined by SDS-PAGE and Coomassie blue staining

Buffer: 25 mM Tris-HCl, 100 mM glycine, pH 7.3, 10% glycerol

Preparation: Recombinant protein was captured through anti-DDK affinity column followed by conventional chromatography steps.

Note: For testing in cell culture applications, please filter before use. Note that you may experience some loss of protein during the filtration process.

Storage: Store at -80°C.

Stability: Stable for 12 months from the date of receipt of the product under proper storage and handling conditions. Avoid repeated freeze-thaw cycles.



[View online »](#)

RefSeq: [NP_775736](#)

Locus ID: 91522

UniProt ID: [Q86Y22](#)

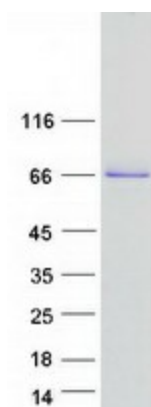
RefSeq Size: 3067

Cytogenetics: 5q35.3

RefSeq ORF: 1620

Summary: COL23A1 is a member of the transmembrane collagens, a subfamily of the nonfibrillar collagens that contain a single pass hydrophobic transmembrane domain (Banyard et al., 2003 [PubMed 12644459]).[supplied by OMIM, Mar 2008]

Product images:



Coomassie blue staining of purified COL23A1 protein (Cat# TP320535). The protein was produced from HEK293T cells transfected with COL23A1 cDNA clone (Cat# [RC220535]) using MegaTran 2.0 (Cat# [TT210002]).