

## Product datasheet for **TP320511M**

### CTBS (NM\_004388) Human Recombinant Protein

#### Product data:

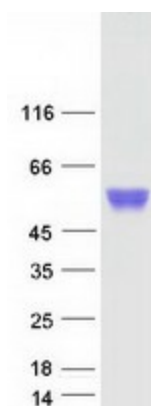
Product Type:	Recombinant Proteins
Description:	Recombinant protein of human chitobiase, di-N-acetyl- (CTBS), 100 µg
Species:	Human
Expression Host:	HEK293T
Expression cDNA Clone or AA Sequence:	>RC220511 protein sequence <b>Red</b> =Cloning site <b>Green</b> =Tags(s)
	MSRPLRRLVSSPPSGVPLALLALLALLALRLAAGTDCPCPEPELCRPIRHHPDFEVFVFDVGQKTW KSYDWSQITTVATFGKYDSELMCYAHSKGARVVLKGDVSLKDIIDPAFRASWIAQKLNLAKTQYMDGINI DIEQEVNCLSPDYDALVKTETDSFHREIEGSQVTFDVAWSPKNIDRRCYNYTGIADACDFVMSYD EQSQIWSECIAAANAPYNQTLTGYN DYIKMSINPKKLVMGVPWYGYDYTCLNLSHDVCTIAKVPFRGAP CSDAAGRQVPYKTIMKQINSSISGNLWDKDQRAPYNYKDPAGHFHQVWYDNPQSISLKATYIQNYRLRG IGMWNANCLDYSGDAVAKQTEEMWEVLKPKLLQR
	<b>TRTRPLEQKLISEEDLAANDILDYKDDDDKV</b>
Tag:	C-Myc/DDK
Predicted MW:	43.6 kDa
Concentration:	>0.05 µg/µL as determined by microplate BCA method
Purity:	> 80% as determined by SDS-PAGE and Coomassie blue staining
Buffer:	25 mM Tris-HCl, 100 mM glycine, pH 7.3, 10% glycerol
Preparation:	Recombinant protein was captured through anti-DDK affinity column followed by conventional chromatography steps.
Note:	For testing in cell culture applications, please filter before use. Note that you may experience some loss of protein during the filtration process.
Storage:	Store at -80°C.
Stability:	Stable for 12 months from the date of receipt of the product under proper storage and handling conditions. Avoid repeated freeze-thaw cycles.
RefSeq:	<a href="#">NP_004379</a>
Locus ID:	1486



[View online »](#)

UniProt ID:	<u>Q01459, Q8TC97</u>
RefSeq Size:	3152
Cytogenetics:	1p22.3
RefSeq ORF:	1155
Synonyms:	CTB
Summary:	Chitobiase is a lysosomal glycosidase involved in degradation of asparagine-linked oligosaccharides on glycoproteins (Aronson and Kuranda, 1989 [PubMed 2531691]).[supplied by OMIM, Nov 2010]

### Product images:



Coomassie blue staining of purified CTBS protein (Cat# [TP320511]). The protein was produced from HEK293T cells transfected with CTBS cDNA clone (Cat# [RC220511]) using MegaTran 2.0 (Cat# [TT210002]).