

## Product datasheet for TP320511L

### CTBS (NM\_004388) Human Recombinant Protein

#### Product data:

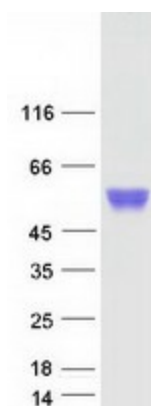
|                                       |   |
|---------------------------------------|---|
| Product Type:                         | Recombinant Proteins  |
| Description:                          | Recombinant protein of human chitobiase, di-N-acetyl- (CTBS), 1 mg  |
| Species:                              | Human   |
| Expression Host:                      | HEK293T   |
| Expression cDNA Clone or AA Sequence: | >RC220511 protein sequence<br>Red=Cloning site Green=Tags(s)  |
|                                       | MSRPLRRLVSSPPSGVPLALLALLALLALRLAAGTDCPCPEPELCRPIRHHPDFEVFVFDVGQKTW<br>KSYDWSQITTVATFGKYDSELMCYAHSKGARVVLKGDVSLKDIIDPAFRASWIAQKLNLAKTQYMDGINI<br>DIEQEVNCLSPDYDALVKTETDSFHREIEGSQVTFDVAWSPKNIDRRCYNYTGIADACDFLFVMSYD<br>EQSQIWSECIAAANAPYNQTLTGYN DYIKMSINPKKLVMGVPWYGYDYTCLNLSHDVCTIAKVPFRGAP<br>CSDAAGRQVPYKTIMKQINSSISGNLWDKDQRAPYYNYKDPAGHFHQVWYDNPQSISLKATYIQNYRLRG<br>IGMWNANCLDYSGDAVAKQTEEMWEVLKPKLLQR |
|                                       | TRTRPLEQKLISEEDLAANDILDYKDDDDKV   |
| Tag:                                  | C-Myc/DDK   |
| Predicted MW:                         | 43.6 kDa  |
| Concentration:                        | >0.05 µg/µL as determined by microplate BCA method  |
| Purity:                               | > 80% as determined by SDS-PAGE and Coomassie blue staining   |
| Buffer:                               | 25 mM Tris-HCl, 100 mM glycine, pH 7.3, 10% glycerol  |
| Preparation:                          | Recombinant protein was captured through anti-DDK affinity column followed by conventional chromatography steps.  |
| Note:                                 | For testing in cell culture applications, please filter before use. Note that you may experience some loss of protein during the filtration process.  |
| Storage:                              | Store at -80°C.   |
| Stability:                            | Stable for 12 months from the date of receipt of the product under proper storage and handling conditions. Avoid repeated freeze-thaw cycles.   |
| RefSeq:                               | <a href="#">NP_004379</a>   |
| Locus ID:                             | 1486  |



[View online »](#)

|               |  |
|---------------|--|
| UniProt ID:   | <u>Q01459, Q8TC97</u>  |
| RefSeq Size:  | 3152   |
| Cytogenetics: | 1p22.3   |
| RefSeq ORF:   | 1155   |
| Synonyms:     | CTB  |
| Summary:      | Chitobiase is a lysosomal glycosidase involved in degradation of asparagine-linked oligosaccharides on glycoproteins (Aronson and Kuranda, 1989 [PubMed 2531691]).[supplied by OMIM, Nov 2010] |

### Product images:



Coomassie blue staining of purified CTBS protein (Cat# [TP320511]). The protein was produced from HEK293T cells transfected with CTBS cDNA clone (Cat# [RC220511]) using MegaTran 2.0 (Cat# [TT210002]).