

Product datasheet for **TP320493M**

Contactin 1 (CNTN1) (NM_175038) Human Recombinant Protein

Product data:

Product Type:	Recombinant Proteins
Description:	Recombinant protein of human contactin 1 (CNTN1), transcript variant 2, 100 µg
Species:	Human
Expression Host:	HEK293T
Expression cDNA Clone or AA Sequence:	>RC220493 representing NM_175038 Red =Cloning site Green =Tags(s)

MKMWLLVSHLVIISITTC LAVSEEDKGF GPIFEEQPINTIYPEESLEGK VSLNCRARAS PFPVYKWRMNN
 GDVDLTSDRYSMVGGNLVINNPDKQKDAGIYYCLASNNYGMVRSTEATLSFGYLD PFPPEERPEVRVKEG
 KGMVLLCDPPYHFPDDL SYRWLLNEFPV FITMDKRRFVSQTNGNLYIANVEASDKGNYS CFVSSPITKS
 VFSKFIPLIPIPERTTKYPADIVVQFKDVYALMGQNV TLECFALGNPVPDIRWRKVLEPMPSTAEISTS
 GAVLKIFNIQLEDEGIYECEAENIRGKDKHQARIYVQAFPEWVEHINDTEVDIGSDLYWPCVATGKPIPT
 IRWLKNGYAYHKGELRLYDVT FENAGMYQCIAENTYGA IYANAELKILALAPTFEMNPMKKKILAAKGGR
 VIIECKPKAAPKPKFSWSKGT EWLNVSSRILIWEDGSLEINNITRNDGGIYTCFAENNRGKANSTGTLVI
 TDPTRIILAPINADITVGENATMQCAASFD PALDLTFVWSFNGYVIDFNKENIHYQRNFM LDSNGELLIR
 NAQLKHAGRYTCTAQTIVDNSSASADLVVRGPPGPPGLRIEDIRATSVALTWSRGS DNHSPISKYTIQT
 KTILSDDWKDAKTD PPIIEGNMEAA RAVDLIPWMEYEF RVVATNTLGRGEPSIPSNRIKTDGAAPNVAPS
 DVGGGGGRNRELITWAPLSREYHYGN NFGYIVAFKPF DGEWKKVTVTNPDTGRYVHKDETMSPSTAFQ
 VKVKAFNNKGDGPYSLVAVINSAQDAPSEAPTEVGK VLSSEISVHWEHVLEKIVESYQIRYWA AHDKE
 EAANRVQVTSQEYSARLENLLPDTQYFIEVGACNSAGCGPPSDMIEAFTKKAPPSQP PPIISSVRSGSRY
 IITWDHVVALSNESTVTGYKVL YRPDGGQHDGKLYSTHKHSIEVPIPRDGEYVWEVRAHSDGGDGVVSQVK
 ISGAPTLSPSLLGLLLPAFGILVYLEF

TRTRPLEQKLISEEDLAANDILDYKDDDDKV

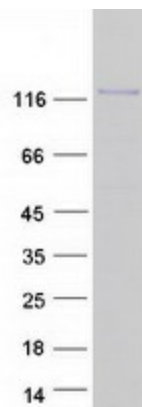
Tag:	C-Myc/DDK
Predicted MW:	109.6 kDa
Concentration:	>0.05 µg/µL as determined by microplate BCA method
Purity:	> 80% as determined by SDS-PAGE and Coomassie blue staining
Buffer:	25 mM Tris-HCl, 100 mM glycine, pH 7.3, 10% glycerol



[View online »](#)

Preparation:	Recombinant protein was captured through anti-DDK affinity column followed by conventional chromatography steps.
Note:	For testing in cell culture applications, please filter before use. Note that you may experience some loss of protein during the filtration process.
Storage:	Store at -80°C.
Stability:	Stable for 12 months from the date of receipt of the product under proper storage and handling conditions. Avoid repeated freeze-thaw cycles.
RefSeq:	NP_778203
Locus ID:	1272
UniProt ID:	Q12860
RefSeq Size:	3394
Cytogenetics:	12q12
RefSeq ORF:	3021
Synonyms:	F3; GP135; MYPCN
Summary:	The protein encoded by this gene is a member of the immunoglobulin superfamily. It is a glycosylphosphatidylinositol (GPI)-anchored neuronal membrane protein that functions as a cell adhesion molecule. It may play a role in the formation of axon connections in the developing nervous system. Multiple alternatively spliced transcript variants encoding different isoforms have been found for this gene. [provided by RefSeq, Dec 2011]
Protein Pathways:	Cell adhesion molecules (CAMs)

Product images:



Coomassie blue staining of purified CNTN1 protein (Cat# [TP320493]). The protein was produced from HEK293T cells transfected with CNTN1 cDNA clone (Cat# [RC220493]) using MegaTran 2.0 (Cat# [TT210002]).