

## Product datasheet for **TP320396M**

### FLCN (NM\_144997) Human Recombinant Protein

#### Product data:

**Product Type:** Recombinant Proteins  
**Description:** Recombinant protein of human folliculin (FLCN), transcript variant 1, 100 µg  
**Species:** Human  
**Expression Host:** HEK293T  
**Expression cDNA Clone or AA Sequence:** >RC220396 representing NM\_144997  
**Red**=Cloning site **Green**=Tags(s)

MNAIVALCHFCELHGPRTLFCTEVLHAPLPQGDGNEDSPGQGEQAEEEEEGGIQMNSRMRAHSPAEGASVE  
SSSPGPKKSDMCEGCRSLAAGHPGYISHDKETSISIKYVSHQHPSHPQLFSIVRQACVRSLSCEVCPGREGP  
IFFGDEQHGFVFSHTFFIKDSLARGEFQRWYSIITIMMDRIYLINSWPFLLGKVRGIIDELQGKALKVFEA  
EQFGCPQRAQRMNTAFTPFLHQRNGNAARSLTSLTSDDNLWACLHTSFAWLLKACGSRLTEKLLLEGAPTE  
DTLVQMEKLADLEEESESWDNSEAEEEEEKAPVLPPESTEGRELTQGPAESSSLSGCGSWQPRKLPVFKSLR  
HMRQVLGAPSFRMLAWHVLMGNQVIWKSRDVDLVQSAFEVLRTMLPVGCVRIIPYSSQYEEAYRCNFLGL  
SPHVQIPPHVLSSEFAVIVEVHAAARSTLHPVGCEDDQSLSKYEFVVTSGPVAADRVGPTILNKIEAAL  
TNQNLSVDVDQCLVCLKEEWMNKVKVLFKFTKVDSRPKEDTQKLLSILGASEEDNVKLLKFWMTGLSKT  
YKSHLMSTVRSPTASESRN

**TRTRPLEQKLISEEDLAANDILDYKDDDDKV**

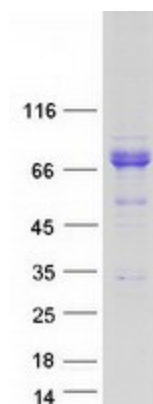
**Tag:** C-Myc/DDK  
**Predicted MW:** 64.3 kDa  
**Concentration:** >0.05 µg/µL as determined by microplate BCA method  
**Purity:** > 80% as determined by SDS-PAGE and Coomassie blue staining  
**Buffer:** 25 mM Tris-HCl, 100 mM glycine, pH 7.3, 10% glycerol  
**Preparation:** Recombinant protein was captured through anti-DDK affinity column followed by conventional chromatography steps.  
**Note:** For testing in cell culture applications, please filter before use. Note that you may experience some loss of protein during the filtration process.  
**Storage:** Store at -80°C.



[View online »](#)

<b>Stability:</b>	Stable for 12 months from the date of receipt of the product under proper storage and handling conditions. Avoid repeated freeze-thaw cycles.
<b>RefSeq:</b>	<a href="#">NP_659434</a>
<b>Locus ID:</b>	201163
<b>UniProt ID:</b>	<a href="#">Q8NFG4</a>
<b>RefSeq Size:</b>	3717
<b>Cytogenetics:</b>	17p11.2
<b>RefSeq ORF:</b>	1737
<b>Synonyms:</b>	BHD; DENND8B; FLCL
<b>Summary:</b>	This gene is located within the Smith-Magenis syndrome region on chromosome 17. Mutations in this gene are associated with Birt-Hogg-Dube syndrome, which is characterized by fibrofolliculomas, renal tumors, lung cysts, and pneumothorax. Alternative splicing of this gene results in two transcript variants encoding different isoforms. [provided by RefSeq, Jul 2008]
<b>Protein Families:</b>	Druggable Genome
<b>Protein Pathways:</b>	Renal cell carcinoma

### Product images:



Coomassie blue staining of purified FLCN protein (Cat# [TP320396]). The protein was produced from HEK293T cells transfected with FLCN cDNA clone (Cat# [RC220396]) using MegaTran 2.0 (Cat# [TT210002]).