

Product datasheet for **TP320388M**

HP1 gamma (CBX3) (NM_016587) Human Recombinant Protein

Product data:

Product Type: Recombinant Proteins

Description: Recombinant protein of human chromobox homolog 3 (HP1 gamma homolog, Drosophila) (CBX3), transcript variant 2, 100 µg

Species: Human

Expression Host: HEK293T

Expression cDNA Clone or AA Sequence: >RC220388 protein sequence
Red=Cloning site **Green**=Tags(s)

MASNKTTLQKMGKKQNGKSKKVEEAPEEFVVEKVLDRRVNGKVEYFLKWKGFADADNTWEPEENLDCP
ELIEAFLNSQKAGKEKDGTGRKSLSDSEDDSKSKKRDAADKPRGFARGLDPERIIGATDSSGELMFLM
KWKDSDEADLVLAKEANMKCPQIVIAFYEERL TWHSCEPEDEAQ

TRTRPLEQKLISEEDLAANDILDYKDDDDKV

Tag: C-Myc/DDK

Predicted MW: 20.6 kDa

Concentration: >0.05 µg/µL as determined by microplate BCA method

Purity: > 80% as determined by SDS-PAGE and Coomassie blue staining

Buffer: 25 mM Tris-HCl, 100 mM glycine, pH 7.3, 10% glycerol

Preparation: Recombinant protein was captured through anti-DDK affinity column followed by conventional chromatography steps.

Note: For testing in cell culture applications, please filter before use. Note that you may experience some loss of protein during the filtration process.

Storage: Store at -80°C.

Stability: Stable for 12 months from the date of receipt of the product under proper storage and handling conditions. Avoid repeated freeze-thaw cycles.

RefSeq: [NP_057671](#)

Locus ID: 11335

UniProt ID: [Q13185](#)



[View online »](#)

RefSeq Size: 2102

Cytogenetics: 7p15.2

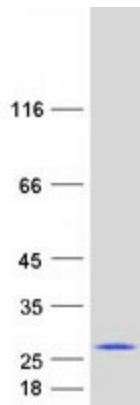
RefSeq ORF: 549

Synonyms: HECH; HP1-GAMMA; HP1Hs-gamma

Summary: At the nuclear envelope, the nuclear lamina and heterochromatin are adjacent to the inner nuclear membrane. The protein encoded by this gene binds DNA and is a component of heterochromatin. This protein also can bind lamin B receptor, an integral membrane protein found in the inner nuclear membrane. The dual binding functions of the encoded protein may explain the association of heterochromatin with the inner nuclear membrane. This protein binds histone H3 tails methylated at Lys-9 sites. This protein is also recruited to sites of ultraviolet-induced DNA damage and double-strand breaks. Two transcript variants encoding the same protein but differing in the 5' UTR, have been found for this gene.[provided by RefSeq, Mar 2011]

Protein Families: Druggable Genome, Transcription Factors

Product images:



Coomassie blue staining of purified CBX3 protein (Cat# [TP320388]). The protein was produced from HEK293T cells transfected with CBX3 cDNA clone (Cat# [RC220388]) using MegaTran 2.0 (Cat# [TT210002]).