

Product datasheet for **TP320296M**

BTNL9 (NM_152547) Human Recombinant Protein

Product data:

Product Type:	Recombinant Proteins
Description:	Recombinant protein of human butyrophilin-like 9 (BTNL9), 100 µg
Species:	Human
Expression Host:	HEK293T
Expression cDNA Clone or AA Sequence:	>RC220296 representing NM_152547 Red =Cloning site Green =Tags(s)

MVDLSVSPDSLKPVSLTSSLVFLMHLLLLQPGEPSSEVKVLGPEYPILALVGEEVEFPCHLWPQLDAQQM
EIRWFRSQTFNVVHLYQEQQELPGRQMPAFRNRTKLVKDDIAYGSVWLQLHSIIPSDKGTGCRFHSDNF
SGEALWELEVAGLGSDPHLSLEGFKEGGIQLRLRSSGWYPKPKVQWRDHQGCCLPPEFEAIWDAQDLFS
LETSVVRAGALS NVSVSIQNLLLSQKELVVQIADVFVPGASAWKSAFVATLPLLLVLAALALGVLRKQ
RRSREKLRKQAEKRQEKLTAELEKLQTELDWRRRAEQAEWRAAQKYAVDVTLPASAHPSLEVS EDGKSV
SSRGAPP GPAPGHPQRFSEQTCALSLERFSAGRHYWEVHVGRRSRWFLGACLA AVPRAGPARLSPAAGYW
VLGLWNGCEYFVLAPHRVALTLRVPPRRLGVFLDYEAGELSSFFNVSDGSHIFTFHDTFSGALCAYFRPRA
HDGGEHPDPLTICPLPVRGTGVPEENDSDTWLQPYEPADPALDWW

TRTRPLEQKLISEEDLAANDILDYKDDDDKV

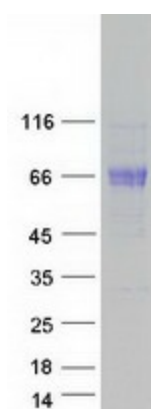
Tag:	C-Myc/DDK
Predicted MW:	59.5 kDa
Concentration:	>0.05 µg/µL as determined by microplate BCA method
Purity:	> 80% as determined by SDS-PAGE and Coomassie blue staining
Buffer:	25 mM Tris-HCl, 100 mM glycine, pH 7.3, 10% glycerol
Preparation:	Recombinant protein was captured through anti-DDK affinity column followed by conventional chromatography steps.
Note:	For testing in cell culture applications, please filter before use. Note that you may experience some loss of protein during the filtration process.
Storage:	Store at -80°C.
Stability:	Stable for 12 months from the date of receipt of the product under proper storage and handling conditions. Avoid repeated freeze-thaw cycles.



[View online »](#)

RefSeq:	NP_689760
Locus ID:	153579
UniProt ID:	Q6UXG8 , Q8N324
RefSeq Size:	3479
Cytogenetics:	5q35.3
RefSeq ORF:	1605
Synonyms:	BTN3; BTN8; VDLS1900
Protein Families:	Druggable Genome, Transmembrane

Product images:



Coomassie blue staining of purified BTNL9 protein (Cat# [TP320296]). The protein was produced from HEK293T cells transfected with BTNL9 cDNA clone (Cat# [RC220296]) using MegaTran 2.0 (Cat# [TT210002]).