

Product datasheet for TP320290L

LRIT2 (NM_001017924) Human Recombinant Protein

Product data:

Product Type:	Recombinant Proteins
Description:	Recombinant protein of human leucine-rich repeat, immunoglobulin-like and transmembrane domains 2 (LRIT2), 1 mg
Species:	Human
Expression Host:	HEK293T
Expression cDNA Clone or AA Sequence:	>RC220290 representing NM_001017924 Red=Cloning site Green=Tags(s)

MASVFHYFLLVLVFLDTHAAQPFCLPGCTCSEESFGRTLQCTSVSLGKIPGNLSEEFKQVRIENSPLFEM
PQGSFINMSTLEYLWLNFNINISVIHLGALEHLPELRELRLGNKLCVSPWTAFRATPLLRVLDLKRKID
ALPELALQFLVSLTYLDLSSNRLTVSKSVFLNWPAYQKCRQPCGAEILSSLVVALHDNPWVDCDLRLG
LVQFVKSITLPVILVNSYLICQGPLSKAGQLFHETELSACMKPQISTPSANITIRAGQNVTLRCLAQASP
SPSIAWTYPLSMWREFDVLTSSTGEDTALSELAIPTAAHLVDSGNYTCMASNSIGKSNLVISLHVQPAQAL
HAPDLSLIPSEGNAYIDLRVVKQTVHGILLEWLAVADTSKEEWFTLYIASDEAFRKEVWHIGPGINTYAV
DDLPGTKYEACLSLEGQPPHQGCVAFTGRDAGGLEAREHLLHVTWVLCVLLAVPVGAYAWAAQGPC
SCSKWVLRGCLHRRKAPSCPTAAPQSKDGSFREHPAVCDDGEGHIDTEGDKEKGGTEDNS

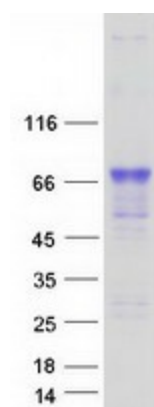
TRTRPLEQKLISEEDLAANDILDYKDDDDKV

Tag:	C-Myc/DDK
Predicted MW:	60 kDa
Concentration:	>0.05 µg/µL as determined by microplate BCA method
Purity:	> 80% as determined by SDS-PAGE and Coomassie blue staining
Buffer:	25 mM Tris-HCl, 100 mM glycine, pH 7.3, 10% glycerol
Preparation:	Recombinant protein was captured through anti-DDK affinity column followed by conventional chromatography steps.
Note:	For testing in cell culture applications, please filter before use. Note that you may experience some loss of protein during the filtration process.
Storage:	Store at -80°C.



[View online »](#)

Stability:	Stable for 12 months from the date of receipt of the product under proper storage and handling conditions. Avoid repeated freeze-thaw cycles.
RefSeq:	NP_001017924
Locus ID:	340745
UniProt ID:	A6NDA9
RefSeq Size:	3221
Cytogenetics:	10q23.1
RefSeq ORF:	1650
Synonyms:	LRRC22
Protein Families:	Transmembrane

Product images:

Coomassie blue staining of purified LRIT2 protein (Cat# [TP320290]). The protein was produced from HEK293T cells transfected with LRIT2 cDNA clone (Cat# [RC220290]) using MegaTran 2.0 (Cat# [TT210002]).