

## Product datasheet for TP320287

### LGSN (NM\_016571) Human Recombinant Protein

#### Product data:

Product Type:	Recombinant Proteins
Description:	Recombinant protein of human lengsin, lens protein with glutamine synthetase domain (LGSN), transcript variant 1, 20 µg
Species:	Human
Expression Host:	HEK293T
Expression cDNA Clone or AA Sequence:	>RC220287 protein sequence <b>Red</b> =Cloning site <b>Green</b> =Tags(s)

MNNEEDLLQEDSTRDEGNETEANSMTLRRTRKVKTKPYVCSTEVGETDMSNSNDCMRDSSQILTPPQLS  
SRMKHIRQAMAKNRLQFVRFEATDLHGVSRSKTIPAHFFQEKVSHGVCMPRGYLEVIPNPKDNEMNNIRA  
TCFNSDIVLMPPELSTFRVLPWADRTARVICDTFTVTGEPDLLTSPRYIAKRQLSHLQASGFSLLSAFIYDF  
CIFGVPEILNSKIISFPALTFLNNHDQPFMQELVDGLYHTGANVESFSSTRPGQMEISFLPEFGISSAD  
NAFTLRTGVKEVARKYNYIASFFIETGFCDSGILSHSLWDVDRKKNMFCSTSGTEQLTITGKKWLAGLLK  
HSAALSCLMAPSVSCRKRYSKDRKDLKKSVPPTTWGYNDNSCIFNIKCHGEKGTRIENKLG SATANPYLVL  
AATVAAGLDGLHSSNEVLGAPDESTDFYQVEPSEIPLKLEDALVALEEDQCLRQALGETFIRYFVAMKKY  
ELENEEIAAERNKFLEYFI

**TRTRPLEQKLISEEDLAANDILDYKDDDDKV**

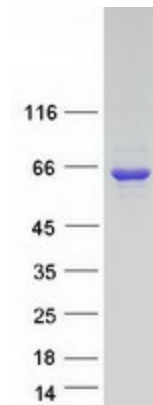
Tag:	C-Myc/DDK
Predicted MW:	57.1 kDa
Concentration:	>0.05 µg/µL as determined by microplate BCA method
Purity:	> 80% as determined by SDS-PAGE and Coomassie blue staining
Buffer:	25 mM Tris-HCl, 100 mM glycine, pH 7.3, 10% glycerol
Preparation:	Recombinant protein was captured through anti-DDK affinity column followed by conventional chromatography steps.
Note:	For testing in cell culture applications, please filter before use. Note that you may experience some loss of protein during the filtration process.
Storage:	Store at -80°C.



[View online »](#)

<b>Stability:</b>	Stable for 12 months from the date of receipt of the product under proper storage and handling conditions. Avoid repeated freeze-thaw cycles.
<b>RefSeq:</b>	<a href="#">NP_057655</a>
<b>Locus ID:</b>	51557
<b>UniProt ID:</b>	<a href="#">Q5TDP6</a>
<b>RefSeq Size:</b>	5634
<b>Cytogenetics:</b>	6q12
<b>RefSeq ORF:</b>	1527
<b>Synonyms:</b>	GLULD1; LGS
<b>Summary:</b>	This gene encodes a protein with similarity to the GS I members of the glutamine synthetase superfamily. The encoded protein is referred to as a pseudo-glutamine synthetase because it has no glutamine synthesis activity and may function as a chaperone protein. This protein is localized to the lens and may be associated with cataract disease. Alternative splicing results in multiple transcript variants. [provided by RefSeq, Jan 2009]

### Product images:



Coomassie blue staining of purified LGSN protein (Cat# TP320287). The protein was produced from HEK293T cells transfected with LGSN cDNA clone (Cat# [RC220287]) using MegaTran 2.0 (Cat# [TT210002]).