

Product datasheet for **TP320263**

KBTBD11 (NM_014867) Human Recombinant Protein

Product data:

Product Type:	Recombinant Proteins
Description:	Recombinant protein of human kelch repeat and BTB (POZ) domain containing 11 (KBTBD11), 20 µg
Species:	Human
Expression Host:	HEK293T
Expression cDNA Clone or AA Sequence:	>RC220263 representing NM_014867 Red =Cloning site Green =Tags(s)

MEHAVAPCVLYPGTEPGAAGESESEGAASPAQTPCSLGASLCFSSGGEESPPQSLASAAEGAATSPSSGG
PRVVERQWEAGSAGAASPEELASPEERACPEEPAAPSPEPRVWLEDPASPEEPGEPAPVPPGFGAVYGEP
DLVLEVSGRRLRAHKAVLAARSDYFRARASRDVLRVQGVSLTALRLLADAYSGRMAGVRPDNVAEVLVAG
ARRLQLPGAARATDAVGPQLSLANCYEVLSAAKRQRLNELRDAAYCFMSDHYLEVLREPAVFGRLSGAE
RDLLRRRLRAGRAHLLAAALGPAGERAGSRPQSPSGDADARGDAAVYCFHAAAGEWRELTRLPEGAPAR
GCGLCVLYNYLHVAGGVAPAGPDGRARPSDQVFCYNPATDSWSAVRPLRQARSQRLLLALDGHLYAVGGG
CLLSVERYDPRADRWAPVAPLPRGAFAVAHEATTCHGEIYVSGSLFYRLLKYDPRRDEWQECPCSSSRE
RSADMVALDGFYRFDLSGSRGEAQAAGPSGVSVRYHCLAKQWSPCVAPLRLPGGPTGLQPFRCAALDG
AIYCVSRAGTWRFQPARERGEAGGDAGQGGGFEALGAPLDVRGVLIPFALSLEKPPRGEQGAP

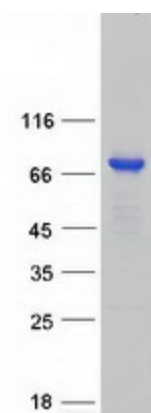
TRTRPLEQKLISEEDLAANDILDYKDDDDKV

Tag:	C-Myc/DDK
Predicted MW:	65.5 kDa
Concentration:	>0.05 µg/µL as determined by microplate BCA method
Purity:	> 80% as determined by SDS-PAGE and Coomassie blue staining
Buffer:	25 mM Tris-HCl, 100 mM glycine, pH 7.3, 10% glycerol
Preparation:	Recombinant protein was captured through anti-DDK affinity column followed by conventional chromatography steps.
Note:	For testing in cell culture applications, please filter before use. Note that you may experience some loss of protein during the filtration process.
Storage:	Store at -80°C.



[View online »](#)

Stability:	Stable for 12 months from the date of receipt of the product under proper storage and handling conditions. Avoid repeated freeze-thaw cycles.
RefSeq:	<u>NP_055682</u>
Locus ID:	9920
UniProt ID:	<u>O94819</u>
RefSeq Size:	6706
Cytogenetics:	8p23.3
RefSeq ORF:	1869
Synonyms:	KLHDC7C

Product images:

Coomassie blue staining of purified KBTBD11 protein (Cat# TP320263). The protein was produced from HEK293T cells transfected with KBTBD11 cDNA clone (Cat# [RC220263]) using MegaTran 2.0 (Cat# [TT210002]).