

## Product datasheet for **TP320253**

### SH2D6 (NM\_198482) Human Recombinant Protein

#### Product data:

Product Type:	Recombinant Proteins
Description:	Recombinant protein of human SH2 domain containing 6 (SH2D6), 20 µg
Species:	Human
Expression Host:	HEK293T
Expression cDNA Clone or AA Sequence:	>RC220253 representing NM_198482 <b>Red</b> =Cloning site <b>Green</b> =Tags(s)
	MYASSYPPPPQLSPRSHLCPPPPHPTPPQLNLLLLLEGRKSSLPSVAPTGSASAAEDSDLLTQPWYSGNC DRYAVESALLHLQKDGAYTVRPSSGPHGSQPFTLAVLLRGRVFNIPIRRDLGGRHYALGREGRNREELFS SVAAMVQHFMWHLPLVDRHSGSRELTCLLFPTKP
	<b>TRTRPLEQKLISEEDLAANDILDYKDDDDKV</b>
Tag:	C-Myc/DDK
Predicted MW:	19.1 kDa
Concentration:	>0.05 µg/µL as determined by microplate BCA method
Purity:	> 80% as determined by SDS-PAGE and Coomassie blue staining
Buffer:	25 mM Tris-HCl, 100 mM glycine, pH 7.3, 10% glycerol
Preparation:	Recombinant protein was captured through anti-DDK affinity column followed by conventional chromatography steps.
Note:	For testing in cell culture applications, please filter before use. Note that you may experience some loss of protein during the filtration process.
Storage:	Store at -80°C.
Stability:	Stable for 12 months from the date of receipt of the product under proper storage and handling conditions. Avoid repeated freeze-thaw cycles.
RefSeq:	<a href="#">NP_940884</a>
Locus ID:	284948
RefSeq Size:	909
Cytogenetics:	2p11.2

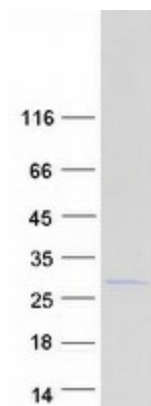


[View online »](#)

RefSeq ORF: 525

Synonyms: FLJ35993

### Product images:



Coomassie blue staining of purified SH2D6 protein (Cat# TP320253). The protein was produced from HEK293T cells transfected with SH2D6 cDNA clone (Cat# [RC220253]) using MegaTran 2.0 (Cat# [TT210002]).