

## Product datasheet for TP320245L

### CHRD2 (NM\_015424) Human Recombinant Protein

#### Product data:

Product Type:	Recombinant Proteins
Description:	Recombinant protein of human chordin-like 2 (CHRD2), 1 mg
Species:	Human
Expression Host:	HEK293T
Expression cDNA Clone or AA Sequence:	>RC220245 representing NM_015424 Red=Cloning site Green=Tags(s)

MVPEVRVLSLLGLALLWFPLDSHARARPDMFCLFHGKRYSPGESWHPYLEPQGLMYCLRRTCSEGAHVS  
CYRLHCPPVHCPQPVTEPQQCCPKVEPHTPSGLRAPPKSCQHNGTMYQHGEIFSAHELFP SRLPNQCVL  
CSCTEGQIYCGLTTCPEPGCPAPLPLPDSCCQACKDEASEQSDEEDSVQSLHGVRHPQDPCSSDAGRKRKRG  
PGTPAPTGLSAPLSFIPRHRFPKGAGSTTVKIVLKEKHKACVHGKTYSHGEVWHPAFRAGPLPCILC  
TCEDGRQDCQRVTCPTTEYPCRHPKAVAGKCKICPEDKADPGHSEISSTRCPKAPGRVLVHTSVSPSPDN  
LRRFALEHEASDLVEIYLWKLVKDEETEAQRGEVPGPRPHSQNLPLDSDQESQEARLPERGTALPTARWP  
PRRSLERLPSPDPGAEGHGQSRQSDQDITK

TRTRPLEQKLISEEDLAANDILDYKDDDDKV

Tag:	C-Myc/DDK
Predicted MW:	49.5 kDa
Concentration:	>0.05 µg/µL as determined by microplate BCA method
Purity:	> 80% as determined by SDS-PAGE and Coomassie blue staining
Buffer:	25 mM Tris-HCl, 100 mM glycine, pH 7.3, 10% glycerol
Bioactivity:	Co-immunoprecipitation (PMID: <a href="#">28009989</a> )
Preparation:	Recombinant protein was captured through anti-DDK affinity column followed by conventional chromatography steps.
Note:	For testing in cell culture applications, please filter before use. Note that you may experience some loss of protein during the filtration process.
Storage:	Store at -80°C.
Stability:	Stable for 12 months from the date of receipt of the product under proper storage and handling conditions. Avoid repeated freeze-thaw cycles.



[View online »](#)

RefSeq: [NP\\_056239](#)

Locus ID: 25884

UniProt ID: [Q6WN34](#)

RefSeq Size: 1699

Cytogenetics: 11q13.4

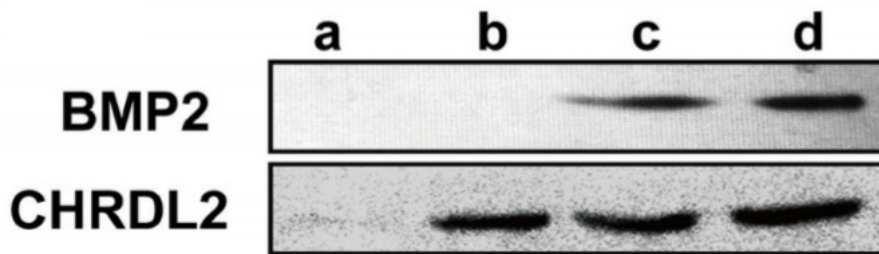
RefSeq ORF: 1353

Synonyms: BNF1; CHL2

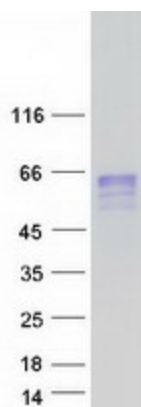
**Summary:** This gene encodes a member of the chordin family of proteins. Chordin family members are secreted proteins that share a cysteine-rich pro-collagen repeat domain and associate with members of the transforming growth factor beta superfamily. In vitro assays demonstrate a direct interaction between the encoded protein and human activin A. This gene is expressed in many tissues including osteoblasts, where it is differentially expressed during differentiation. In addition, its expression is upregulated in human osteoarthritic joint cartilage, suggesting a role in adult cartilage regeneration. [provided by RefSeq, Jan 2015]

**Protein Families:** Secreted Protein

**Product images:**



CHRDL2 binds to BMP2. Co-IP of recombinant CHRDL2 protein (OriGene [TP320245]) and recombinant BMP2 protein and analysis in Western blot with indicated antibodies. a: BMP-2 IP with anti-CHRDL2; b: CHRDL2 IP with anti-CHRDL2; c: the mixture of BMP2 and CHRDL2; d: the mixture of BMP2 and CHRDL2 IP with anti-CHRDL2. Figure cited from Oncotarget, PMID: 28009989



Coomassie blue staining of purified CHRDL2 protein (Cat# [TP320245]). The protein was produced from HEK293T cells transfected with CHRDL2 cDNA clone (Cat# [RC220245]) using MegaTran 2.0 (Cat# [TT210002]).