

Product datasheet for TP320219

SLC30A10 (NM_018713) Human Recombinant Protein

Product data:

Product Type:	Recombinant Proteins
Description:	Purified recombinant protein of Homo sapiens solute carrier family 30, member 10 (SLC30A10), 20 µg
Species:	Human
Expression Host:	HEK293T
Expression cDNA Clone or AA Sequence:	>RC220219 representing NM_018713 Red=Cloning site Green=Tags(s)

MGRYSGKTCRLLFMLVLTVAFFVAELVSGYLGNSIALLSDSFNMLSDLISLCVGLSAGYIARRPTRGFSA
TYGYARAEVVGALSNAVFLTALCFTIFVEAVLRLARPERIDDPVLVIVGLLVNIVVGLLIFQDCAAW
FACCLRGRSRRLLQQRQQLAEGCVPGAFGGPQGAEDPRRAADPTAPGSDSAVTLRGTSVERKREKATVFA
NVAGDSFNTQNEPEDMMKKEKSEALNIRGVLLHVMGDALGSVWVITAIIFYVLPLKSEDPCNWQCYID
PSLTVLMVIIISSAFPLIKETAAILLQMVPKGVNMEELMSKLSAVPGISSVHEVHIWELVSGKIIATLH
IKYPKDRGYQDASTKIREIFHHAGIHNVTIQFENVDLKEPLEQKDLLLNCNSPCISKGCAKQLCCPPGAL
PLAHVNGCAEHNGGPSLDTYGS DGLSRRDAREVAIEVSLDSCLSDHGQSLNKTQEDQCYVNRTHF

TRTRPLEQKLISEEDLAANDILDYKDDDDKV

Tag:	C-Myc/DDK
Predicted MW:	52.5 kDa
Concentration:	>0.05 µg/µL as determined by microplate BCA method
Purity:	> 80% as determined by SDS-PAGE and Coomassie blue staining
Buffer:	25 mM Tris-HCl, 100 mM glycine, pH 7.3, 10% glycerol
Preparation:	Recombinant protein was captured through anti-DDK affinity column followed by conventional chromatography steps.
Note:	For testing in cell culture applications, please filter before use. Note that you may experience some loss of protein during the filtration process.
Storage:	Store at -80°C.
Stability:	Stable for 12 months from the date of receipt of the product under proper storage and handling conditions. Avoid repeated freeze-thaw cycles.



[View online »](#)

RefSeq: [NP_061183](#)

Locus ID: 55532

UniProt ID: [Q6XR72](#), [B3KR19](#)

RefSeq Size: 2869

Cytogenetics: 1q41

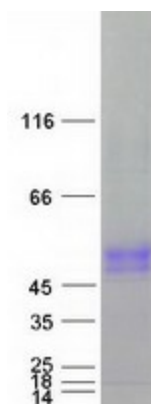
RefSeq ORF: 1455

Synonyms: HMDPC; HMNDYT1; ZnT-10; ZNT8; ZNT10; ZRC1

Summary: This gene is highly expressed in the liver and is inducible by manganese. Its protein product appears to be critical in maintaining manganese levels, and has higher specificity for manganese than zinc. Loss of function mutations appear to result in a pleomorphic phenotype, including dystonia and adult-onset parkinsonism. Alternatively spliced transcript variants have been observed for this gene. [provided by RefSeq, Mar 2012]

Protein Families: Transmembrane

Product images:



Coomassie blue staining of purified SLC30A10 protein (Cat# TP320219). The protein was produced from HEK293T cells transfected with SLC30A10 cDNA clone (Cat# [RC220219]) using MegaTran 2.0 (Cat# [TT210002]).