

## Product datasheet for **TP320218L**

### **INS-IGF2 (NM\_001042376) Human Recombinant Protein**

#### **Product data:**

Product Type:	Recombinant Proteins
Description:	Recombinant protein of human INS-IGF2 readthrough transcript (INS-IGF2), transcript variant 2, 1 mg
Species:	Human
Expression Host:	HEK293T
Expression cDNA Clone or AA Sequence:	>RC220218 representing NM_001042376 <b>Red</b> =Cloning site <b>Green</b> =Tags(s)

MALWMRLLPLLALLALWGPDPAAAFVNQHLCGSHLVEALYLVCGERGFFYTPKTRREAEDLQASALSLS  
STSTWPEGLDARAPPALVVTANIGQAGGSSSRQFRQALGTSDSPVLFHCPGAAGTAQGLEYRGRV  
TTELVWEEVDSSPQPQGSSELPAQPPAQPAQPEPQQAREPSPEVSCCGLWPRRPQRSQN

**TRTRPLEQKLISEEDLAANDILDYKDDDDKV**

Tag:	C-Myc/DDK
Predicted MW:	21.4 kDa
Concentration:	>0.05 µg/µL as determined by microplate BCA method
Purity:	> 80% as determined by SDS-PAGE and Coomassie blue staining
Buffer:	25 mM Tris-HCl, 100 mM glycine, pH 7.3, 10% glycerol
Preparation:	Recombinant protein was captured through anti-DDK affinity column followed by conventional chromatography steps.
Note:	For testing in cell culture applications, please filter before use. Note that you may experience some loss of protein during the filtration process.
Storage:	Store at -80°C.
Stability:	Stable for 12 months from the date of receipt of the product under proper storage and handling conditions. Avoid repeated freeze-thaw cycles.
RefSeq:	<a href="#">NP_001035835</a>
Locus ID:	723961
UniProt ID:	<a href="#">F8WCM5</a>



[View online »](#)

RefSeq Size: 828

Cytogenetics: 11p15.5

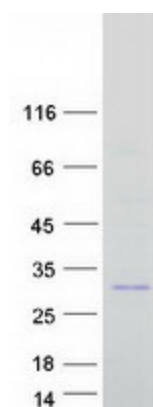
RefSeq ORF: 600

Synonyms: INSIGF

**Summary:** This locus includes two alternatively spliced read-through transcript variants which align to the INS gene in the 5' region and to the IGF2 gene in the 3' region. One transcript is predicted to encode a protein which shares the N-terminus with the INS protein but has a distinct and longer C-terminus, whereas the other transcript is a candidate for nonsense-mediated decay (NMD). The transcripts are imprinted and are paternally expressed in the limb and eye. [provided by RefSeq, Jul 2008]

**Protein Families:** Druggable Genome, ES Cell Differentiation/IPS, Secreted Protein

### Product images:



Coomassie blue staining of purified INS-IGF2 protein (Cat# [TP320218]). The protein was produced from HEK293T cells transfected with INS-IGF2 cDNA clone (Cat# [RC220218]) using MegaTran 2.0 (Cat# [TT210002]).