

Product datasheet for TP320170

IRAG1 (NM_001098579) Human Recombinant Protein

Product data:

Product Type:	Recombinant Proteins
Description:	Recombinant protein of human murine retrovirus integration site 1 homolog (MRVI1), transcript variant 1, 20 µg
Species:	Human
Expression Host:	HEK293T
Expression cDNA Clone or AA Sequence:	>RC220170 representing NM_001098579 Red=Cloning site Green=Tags(s)

MGMDLTCPFVSPACGAQASWSIFGADAAEVPGTRGHSQQEAAMPHIPEDEEPPGEPQAAQSPAGQGPPPT
AGVSCSPTPTIVLTGDATSPEGETDKNLANRVHSPHKRLSHRHLKVSTASLTSVDPAGHIIDLVDLNDQLPD
ISISEEDKKKNLALLEEAKLVSERFLTRRGRKSRSSPGDSPSAVSPNLSASPTSSRSNSLTVPTPPGL
DVCSGPPSPLPGAPPQKGDEADVSSPHPGEPNVPKGLADRKQNDQRKVSQGRAPRPPVVEKSKEIAIEQ
KENFDPLQYPETTPKGLAPVTNSSGKMALNSPQPGPVESELGKQLLKTGWESPLPRSPTQDAAGVGPPA
SQGRGPAGEPMGPEAGSKAELPPTVSRPPLLRGLSWDSGPEEPGPRQLQKVLAKLPLAEEEEKRFAGKAGGK
LAKAPGLKDFQIQVQPVVMQKLTKLREEHILMRNQNLVGLKLPDLSEAAEQEKGLPSELSPAIEEEESKS
GLDVMPNISDVLLRKLVRHSLPGSAPPLTEKEVENVFVQLSLAFRNDSTYLETSRINQAERERNLTEENT
EKELFNKASITSSASLWHHCEHRETYQKLEEDIAVLHRLAARLSSRAEVGAVRQEKRMKATEVMMQY
VENLKRITYEKDHAELMEFKLANQNSSRSCGSPEDGVPRTARSMSLTGKNMPPRRRVSAVVPKFNALNL
PGQTPSSSSIPSLPALSEPNGKSLPVTSPALPALLENGKTNGDPDCEASAPALTLSCLEELSQETKARM
EEEAYSKGFQEGLLKTKELQDLKEEEEEQKSESPEEPEVEEETEEEEKGRSSKLEELVHFLQVMYPKLC
QHWQVIWMMMAAVMLVLTVVLGLYNSYNCAEQADGPLGRSTCSAAQRDSWWSSGLQHEQPTEQ

TRTRPLEQKLISEEDLAANDILDYKDDDDKV

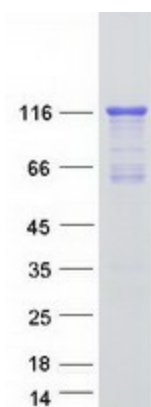
Tag:	C-Myc/DDK
Predicted MW:	97.7 kDa
Concentration:	>0.05 µg/µL as determined by microplate BCA method
Purity:	> 80% as determined by SDS-PAGE and Coomassie blue staining
Buffer:	25 mM Tris-HCl, 100 mM glycine, pH 7.3, 10% glycerol
Preparation:	Recombinant protein was captured through anti-DDK affinity column followed by conventional chromatography steps.



[View online »](#)

Note:	For testing in cell culture applications, please filter before use. Note that you may experience some loss of protein during the filtration process.
Storage:	Store at -80°C.
Stability:	Stable for 12 months from the date of receipt of the product under proper storage and handling conditions. Avoid repeated freeze-thaw cycles.
RefSeq:	NP_001092049
Locus ID:	10335
UniProt ID:	Q9Y6F6
RefSeq Size:	6042
Cytogenetics:	11p15.4
RefSeq ORF:	2709
Synonyms:	IRAG; JAW1L; MRV1
Summary:	This gene is similar to a putative mouse tumor suppressor gene (Mrvi1) that is frequently disrupted by mouse AIDS-related virus (MRV). The encoded protein, which is found in the membrane of the endoplasmic reticulum, is similar to Jaw1, a lymphoid-restricted protein whose expression is down-regulated during lymphoid differentiation. This protein is a substrate of cGMP-dependent kinase-1 (PKG1) that can function as a regulator of IP3-induced calcium release. Studies in mouse suggest that MRV integration at Mrvi1 induces myeloid leukemia by altering the expression of a gene important for myeloid cell growth and/or differentiation, and thus this gene may function as a myeloid leukemia tumor suppressor gene. Several alternatively spliced transcript variants encoding different isoforms have been found for this gene, and alternative translation start sites, including a non-AUG (CUG) start site, are used. [provided by RefSeq, May 2011]
Protein Families:	Transmembrane
Protein Pathways:	Vascular smooth muscle contraction

Product images:



Coomassie blue staining of purified MRV1 protein (Cat# TP320170). The protein was produced from HEK293T cells transfected with MRV1 cDNA clone (Cat# [RC220170]) using MegaTran 2.0 (Cat# [TT210002]).