

Product datasheet for TP320153M

GIT1 (NM_014030) Human Recombinant Protein

Product data:

Product Type:	Recombinant Proteins
Description:	Recombinant protein of human G protein-coupled receptor kinase interacting ArfGAP 1 (GIT1), transcript variant 2, 100 µg
Species:	Human
Expression Host:	HEK293T
Expression cDNA Clone or AA Sequence:	>RC220153 representing NM_014030 Red=Cloning site Green=Tags(s)

MSRKGPRAEVCADCSAPDPGWASISRGVLVCECCSVHRSRSLGRHISIVKHLRHSAPPTLLQMVHTLASN
GANSIWEHSLLDPAQVQSGRRKANPQDKVHPIKSEFIRAKYQMLAFVHKLPCRDDDGVTAKDLSKQLHSS
VRTGNLETCLRLLSLGAQANFFHPEKGTPLHVAAGQTLQAELLVYVYADPGSPDVNGRTPIDYARQA
GHHELAERLVEQCQYELTDRLAFYLCGRKPDHKNHGHYIIPQMADSLDLSELAKAAKKKLQALSNRLEELA
MDVYDEVDRRENDVWLATQNHSTLVTERSAPVFLPVNPEYSATRNQGRQKLARFNAREFATLIIDILSE
AKRRQQGKSLSSPTDNLLESLRSQSDLDQHDYDSVASDEDTDQEPLRSTGATRSNRARSMDSSDLSLSDGA
VTLQEYLELKKALATSEAKVQQLMKVNSSLDELRLRQREIHKLQAENLQLRQPPGPVPTPLPSEAEH
TPMAPGGSTHRRDRQAFSMYEPGSALKPFGGPPGDELTTTLRQPFHSTELEDDAIYSVHVHPAGLYRIRKGV
SASAVPFTPSSPLSCSQEGSRHTSKLSRHGSGADSDYENTQSGDPLLGLEGRFLELGKEEDFHPELES
LDGDLDPGLPSTEDVILKTEQVTKNIQELLRAAQEFKHDSFVPCSEKIHLAVTEMASLFPKRPALPEVRS
SLRLLNASAYRLQSECRKTVPEPGAPVDFQLLTQQVIQCAVDIAKAAKQLVTITTTREKKQ

TRTRPLEQKLISEEDLAANDILDYKDDDDKV

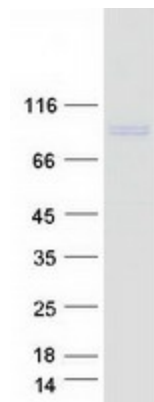
Tag:	C-Myc/DDK
Predicted MW:	84.2 kDa
Concentration:	>0.05 µg/µL as determined by microplate BCA method
Purity:	> 80% as determined by SDS-PAGE and Coomassie blue staining
Buffer:	25 mM Tris-HCl, 100 mM glycine, pH 7.3, 10% glycerol
Preparation:	Recombinant protein was captured through anti-DDK affinity column followed by conventional chromatography steps.
Note:	For testing in cell culture applications, please filter before use. Note that you may experience some loss of protein during the filtration process.



[View online »](#)

Storage:	Store at -80°C.
Stability:	Stable for 12 months from the date of receipt of the product under proper storage and handling conditions. Avoid repeated freeze-thaw cycles.
RefSeq:	NP_054749
Locus ID:	28964
UniProt ID:	Q9Y2X7
RefSeq Size:	3758
Cytogenetics:	17q11.2
RefSeq ORF:	2283
Summary:	GTPase-activating protein for the ADP ribosylation factor family. May serve as a scaffold to bring together molecules to form signaling modules controlling vesicle trafficking, adhesion and cytoskeletal organization. Increases the speed of cell migration, as well as the size and rate of formation of protrusions, possibly by targeting PAK1 to adhesions and the leading edge of lamellipodia. Sequesters inactive non-tyrosine-phosphorylated paxillin in cytoplasmic complexes. Involved in the regulation of cytokinesis; the function may involve ENTR1 and PTPN13 (By similarity).[UniProtKB/Swiss-Prot Function]
Protein Families:	Druggable Genome
Protein Pathways:	Endocytosis, Epithelial cell signaling in Helicobacter pylori infection, Regulation of actin cytoskeleton

Product images:



Coomassie blue staining of purified GIT1 protein (Cat# [TP320153]). The protein was produced from HEK293T cells transfected with GIT1 cDNA clone (Cat# [RC220153]) using MegaTran 2.0 (Cat# [TT210002]).