

## Product datasheet for **TP320153**

### **GIT1 (NM\_014030) Human Recombinant Protein**

#### **Product data:**

<b>Product Type:</b>	Recombinant Proteins
<b>Description:</b>	Recombinant protein of human G protein-coupled receptor kinase interacting ArfGAP 1 (GIT1), transcript variant 2, 20 µg
<b>Species:</b>	Human
<b>Expression Host:</b>	HEK293T
<b>Expression cDNA Clone or AA Sequence:</b>	Recombinant protein was produced with TrueORF clone, RC220153.
<b>Tag:</b>	C-Myc/DDK
<b>Predicted MW:</b>	84.2 kDa
<b>Concentration:</b>	>0.05 µg/µL as determined by microplate BCA method
<b>Purity:</b>	> 80% as determined by SDS-PAGE and Coomassie blue staining
<b>Buffer:</b>	25 mM Tris-HCl, 100 mM glycine, pH 7.3, 10% glycerol
<b>Preparation:</b>	Recombinant protein was captured through anti-DDK affinity column followed by conventional chromatography steps.
<b>Note:</b>	For testing in cell culture applications, please filter before use. Note that you may experience some loss of protein during the filtration process.
<b>Storage:</b>	Store at -80°C.
<b>Stability:</b>	Stable for 12 months from the date of receipt of the product under proper storage and handling conditions. Avoid repeated freeze-thaw cycles.
<b>RefSeq:</b>	<a href="#">NP_054749</a>
<b>Locus ID:</b>	28964
<b>UniProt ID:</b>	<a href="#">Q9Y2X7</a>
<b>RefSeq Size:</b>	3758
<b>Cytogenetics:</b>	17q11.2
<b>RefSeq ORF:</b>	2283



[View online »](#)

**Summary:**

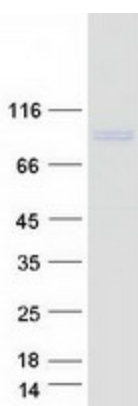
GTPase-activating protein for the ADP ribosylation factor family. May serve as a scaffold to bring together molecules to form signaling modules controlling vesicle trafficking, adhesion and cytoskeletal organization. Increases the speed of cell migration, as well as the size and rate of formation of protrusions, possibly by targeting PAK1 to adhesions and the leading edge of lamellipodia. Sequesters inactive non-tyrosine-phosphorylated paxillin in cytoplasmic complexes. Involved in the regulation of cytokinesis; the function may involve ENTR1 and PTPN13 (By similarity).[UniProtKB/Swiss-Prot Function]

**Protein Families:**

Druggable Genome

**Protein Pathways:**

Endocytosis, Epithelial cell signaling in Helicobacter pylori infection, Regulation of actin cytoskeleton

**Product images:**

Coomassie blue staining of purified GIT1 protein (Cat# TP320153). The protein was produced from HEK293T cells transfected with GIT1 cDNA clone (Cat# [RC220153]) using MegaTran 2.0 (Cat# [TT210002]).