

Product datasheet for TP320139L

TBL1Y (NM_033284) Human Recombinant Protein

Product data:

Product Type:	Recombinant Proteins
Description:	Recombinant protein of human transducin (beta)-like 1Y-linked (TBL1Y), transcript variant 1, 1 mg
Species:	Human
Expression Host:	HEK293T
Expression cDNA	>RC220139 protein sequence
Clone or AA Sequence:	Red=Cloning site Green=Tags(s)

MSITSDEVNFLVYRYLQESGFSHSAFTFGIESHISQSNINGTLVPPSALISILQKGLQYVEAEISINKDG
TVFDSRPIESLSLIVAVIPDVVQMRQQAFGEKLTQQQASAAATEASAMAKAATMTPAAISQQNPPKNREA
TVNGEENGAHEINNHSKPMIDGDVEIPPKNATVLRGHESEVFCAWNPNVSDLLASGSGDSTARIWNLNE
NSNGGSTQLVLRHCIREGGHDVPSNKDVTSLDWNSDGTLLAMGSYDGFARIWTENGNLASTLGQHKGPFI
ALKWNKKGNVLSAGVDKTTIIWDAHTGEAKQQFPFHSAPALDVDWQNNMTFASCSTDMCIHVCRLGCDH
PVKTFQGHTNEVNAIKWDPSGMLLASCSDMTLKIWSMKQDACVHDLQAHSKEIYTIKWSPTGPATSNPN
SSIMLASASFDSTVRLWDVEQGVCTHTLMKHQEPVYSVAFSPDGKYLASGSFDKYVHIWNTQSGSLVHSY
QGTGGIFEVCWNARGDKVGASASDGSVCVLDL

TRTRPLEQKLISEEDLAANDILDYKDDDDKV

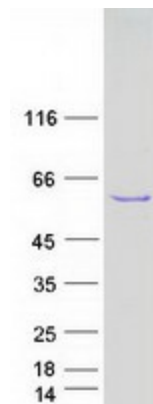
Tag:	C-Myc/DDK
Predicted MW:	56.5 kDa
Concentration:	>0.05 µg/µL as determined by microplate BCA method
Purity:	> 80% as determined by SDS-PAGE and Coomassie blue staining
Buffer:	25 mM Tris-HCl, 100 mM glycine, pH 7.3, 10% glycerol
Preparation:	Recombinant protein was captured through anti-DDK affinity column followed by conventional chromatography steps.
Note:	For testing in cell culture applications, please filter before use. Note that you may experience some loss of protein during the filtration process.
Storage:	Store at -80°C.



[View online »](#)

Stability:	Stable for 12 months from the date of receipt of the product under proper storage and handling conditions. Avoid repeated freeze-thaw cycles.
RefSeq:	NP_150600
Locus ID:	90665
UniProt ID:	Q9BQ87 , A0A024R189
RefSeq Size:	2407
Cytogenetics:	Yp11.2
RefSeq ORF:	1566
Synonyms:	DFNY2; TBL1
Summary:	The protein encoded by this gene has sequence similarity with members of the WD40 repeat-containing protein family. The WD40 group is a large family of proteins, which appear to have a regulatory function. It is believed that the WD40 repeats mediate protein-protein interactions and members of the family are involved in signal transduction, RNA processing, gene regulation, vesicular trafficking, cytoskeletal assembly and may play a role in the control of cytotypic differentiation. This gene is highly similar to TBL1X gene in nucleotide sequence and protein sequence, but the TBL1X gene is located on chromosome X and this gene is on chromosome Y. This gene has three alternatively spliced transcript variants encoding the same protein. [provided by RefSeq, Jul 2008]
Protein Families:	Transcription Factors
Protein Pathways:	Wnt signaling pathway

Product images:



Coomassie blue staining of purified TBL1Y protein (Cat# [TP320139]). The protein was produced from HEK293T cells transfected with TBL1Y cDNA clone (Cat# [RC220139]) using MegaTran 2.0 (Cat# [TT210002]).