

Product datasheet for **TP320102M**

Galectin 8 (LGALS8) (NM_006499) Human Recombinant Protein

Product data:

Product Type:	Recombinant Proteins
Description:	Purified recombinant protein of Homo sapiens lectin, galactoside-binding, soluble, 8 (LGALS8), transcript variant 1, 100 µg
Species:	Human
Expression Host:	HEK293T
Expression cDNA Clone or AA Sequence:	>RC220102 representing NM_006499 Red =Cloning site Green =Tags(s)
	<p>MMLSLNNLQNIYNPVIPFVGTIPDQLDPGTLVIRGHVPSDADRFQVDLQNGSSMKPRADVAHFHFNPRF KRAGCIVCNTLINEKWGREITYDTPFKREKSFEIVIMVLKDKFQVAVNGKHTLLYGHRIGPEKIDTLGI YGKVNIIHSIGFSFSSDLQSTQASSLELTEISRENVPKSGTPQLPSNRGGDISKIAPRTVYTKSKDSTVNH TLTCTKIPPMNYVSKRLPFAARLNTPMGPGRTVWVKGEVNANAKSFNVDLLAGKSKDIALHLNPRLNIKA FVRNSFLQESWGEEERNITSFPFSPGMYFEMIIYCDVREFKVAVNGVHSLEYKHRFKELSSIDTLEINGD IHLLEVRWS</p> <p>TRTRPLEQKLISEEDLAANDILDYKDDDDKV</p>
Tag:	C-Myc/DDK
Predicted MW:	40.2 kDa
Concentration:	>0.05 µg/µL as determined by microplate BCA method
Purity:	> 80% as determined by SDS-PAGE and Coomassie blue staining
Buffer:	25 mM Tris-HCl, 100 mM glycine, pH 7.3, 10% glycerol
Preparation:	Recombinant protein was captured through anti-DDK affinity column followed by conventional chromatography steps.
Note:	For testing in cell culture applications, please filter before use. Note that you may experience some loss of protein during the filtration process.
Storage:	Store at -80°C.
Stability:	Stable for 12 months from the date of receipt of the product under proper storage and handling conditions. Avoid repeated freeze-thaw cycles.
RefSeq:	<u>NP_006490</u>

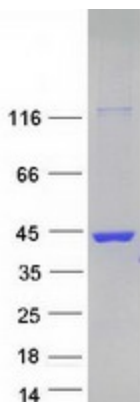


[View online »](#)

Locus ID:	3964
UniProt ID:	O00214
RefSeq Size:	2996
Cytogenetics:	1q43
RefSeq ORF:	1077
Synonyms:	Gal-8; PCTA-1; PCTA1; Po66-CBP

Summary: This gene encodes a member of the galectin family. Galectins are beta-galactoside-binding animal lectins with conserved carbohydrate recognition domains. The galectins have been implicated in many essential functions including development, differentiation, cell-cell adhesion, cell-matrix interaction, growth regulation, apoptosis, and RNA splicing. This gene is widely expressed in tumoral tissues and seems to be involved in integrin-like cell interactions. Alternatively spliced transcript variants encoding different isoforms have been identified. [provided by RefSeq, Jul 2008]

Product images:



Coomassie blue staining of purified LGALS8 protein (Cat# [TP320102]). The protein was produced from HEK293T cells transfected with LGALS8 cDNA clone (Cat# [RC220102]) using MegaTran 2.0 (Cat# [TT210002]).