

## Product datasheet for TP320102L

### Galectin 8 (LGALS8) (NM\_006499) Human Recombinant Protein

#### Product data:

<b>Product Type:</b>	Recombinant Proteins
<b>Description:</b>	Purified recombinant protein of Homo sapiens lectin, galactoside-binding, soluble, 8 (LGALS8), transcript variant 1, 1 mg
<b>Species:</b>	Human
<b>Expression Host:</b>	HEK293T
<b>Expression cDNA Clone or AA Sequence:</b>	>RC220102 representing NM_006499 <b>Red</b> =Cloning site <b>Green</b> =Tags(s)
	MMLSLNNLQNIYNPVIPFVGTIPDQLDPGTLVIRGHVPSDADRFQVDLQNGSSMKPRADVAHFHFNPRF KRAGCIVCNTLINEKWGREITYDTPFKREKSFEIVIMVLKDKFQVAVNGKHTLLYGHRIGPEKIDTLGI YGKVNIIHSIGFSFSSDLQSTQASSLELTEISRENVPKSGTPQLPSNRGGDISKIAPRTVYTKSKDSTVNH TLTCTKIPPMNYVSKRLPFAARLNTPMGPGRTVWVKGEVNANAKSFNVDLLAGKSKDIALHLNPRLNIKA FVRNSFLQESWGEEERNITSFPFSPGMYFEMIIYCDVREFKVAVNGVHSLEYKHRFKELSSIDTLEINGD IHLLEVRWS
	<b>TRTRPLEQKLISEEDLAANDILDYKDDDDKV</b>
<b>Tag:</b>	C-Myc/DDK
<b>Predicted MW:</b>	40.2 kDa
<b>Concentration:</b>	>0.05 µg/µL as determined by microplate BCA method
<b>Purity:</b>	> 80% as determined by SDS-PAGE and Coomassie blue staining
<b>Buffer:</b>	25 mM Tris-HCl, 100 mM glycine, pH 7.3, 10% glycerol
<b>Preparation:</b>	Recombinant protein was captured through anti-DDK affinity column followed by conventional chromatography steps.
<b>Note:</b>	For testing in cell culture applications, please filter before use. Note that you may experience some loss of protein during the filtration process.
<b>Storage:</b>	Store at -80°C.
<b>Stability:</b>	Stable for 12 months from the date of receipt of the product under proper storage and handling conditions. Avoid repeated freeze-thaw cycles.
<b>RefSeq:</b>	<u><a href="#">NP_006490</a></u>

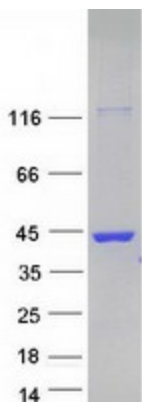


[View online »](#)

Locus ID:	3964
UniProt ID:	<a href="#">O00214</a>
RefSeq Size:	2996
Cytogenetics:	1q43
RefSeq ORF:	1077
Synonyms:	Gal-8; PCTA-1; PCTA1; Po66-CBP

**Summary:** This gene encodes a member of the galectin family. Galectins are beta-galactoside-binding animal lectins with conserved carbohydrate recognition domains. The galectins have been implicated in many essential functions including development, differentiation, cell-cell adhesion, cell-matrix interaction, growth regulation, apoptosis, and RNA splicing. This gene is widely expressed in tumoral tissues and seems to be involved in integrin-like cell interactions. Alternatively spliced transcript variants encoding different isoforms have been identified. [provided by RefSeq, Jul 2008]

### Product images:



Coomassie blue staining of purified LGALS8 protein (Cat# [TP320102]). The protein was produced from HEK293T cells transfected with LGALS8 cDNA clone (Cat# [RC220102]) using MegaTran 2.0 (Cat# [TT210002]).