

Product datasheet for **TP320058M**

MYBPC2 (NM_004533) Human Recombinant Protein

Product data:

Product Type: Recombinant Proteins
Description: Recombinant protein of human myosin binding protein C, fast type (MYBPC2), 100 µg
Species: Human
Expression Host: HEK293T
Expression cDNA Clone or AA Sequence: >RC220058 protein sequence
Red=Cloning site Green=Tags(s)

MPEAKPAAKKAPKGDAPKGAPKEAPPKEAPAEAPKEAPPEDQSPTAEEPTGVFLKKPDSVSVETGKDAV
 VVAKVNGKELPDKPTIKWFKGKWLELGSKSGARFSFKESHNSASNVYTVELHIGKWLGDGRGYRLEVKA
 KDTCDSCGFNIDVEAPRQDASGQSLESFKRTSEKSDTAGELDFSGLLKKREVVVEEKKKKKDDDDLGI
 PPEIWELLKGAKKSEYEKIAFQYGITDLRGMKRLKAKVEVKKSAFTKKLDPAYQVDRGNKIKLMVEI
 SDPDLTLKWFKNQEIKPSSKYVFENVGKKRILTINKCTLADDAAYEVAVKDEKCFTELFPVKEPVLIVT
 PLEDQQVFGDRVEMAVEVSEEGAQVMWMDGVELTREDSEFKARYRFKKGDKRHLIFSDVWQEDRGRYQ
 VITNGGQCEALIVEEKQLEVLQDIADLTVKASEQAVFKCEVSDEKVTGKWKYKNGVEVRPSKRITISHVG
 RFHKLVIDDVRPEDEGDYTFVPDGYALSLSAKLNFLEIKVEYVPKQEPPIHLDCSGKTSENAIVWAGN
 KLRLDVSITGEPVPVATWLKGDVEFTTTEGRTRIEKRVDCSSFVIESAQREDEGRYTIKVTNPVGEDVAS
 IFLQVVDVDPPEAVRITSVGEDWAILVWEPMPYDGGKPVGTGLVERKKKGSQRWMLNFEVFTETTYES
 TKMIEGILYEMRVFAVNAIGVSQPSMNTKPFMPIAPTSEPLHLIVEDVDTTTTLKWRPNNRIGAGGIDG
 YLVEYCLEGSEEWVANTPEPVERCGFTVKNLPTGARILFRVGVNIAGRSEPATLAQPVTIREIAEPPKI
 RLPRHLRQTYIRKVGELNLVVPFQGKPRPQVWWTGGAPLDTSRVHVRTSDFDTVFFVRQAARSDSGEY
 ELSVQIENMKDTATIRIRVVEKAGPPINVMVKEVWGTNALVEWQAPKDDGNSEIMGYFVQKADKKTMEWF
 NVYERNRHTSCTVSDLIVGNEYFRVYTENICGLSDSPGVSKNTARILKTGITFKPFYEKHDFRMAPKF
 LTPLIDRVVWAGYSAALNCAVRGHPKPKVWMMKNKMEIREDPKFLITNYQGVLTNIRRPSFPDAGTYTC
 RAVNELGEALAECKLEVRVPQ

TRTRPLEQKLISEEDLAANDILDYKDDDDKV

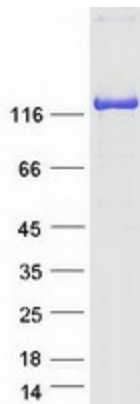
Tag: C-Myc/DDK
Predicted MW: 127.9 kDa
Concentration: >0.05 µg/µL as determined by microplate BCA method
Purity: > 80% as determined by SDS-PAGE and Coomassie blue staining
Buffer: 25 mM Tris-HCl, 100 mM glycine, pH 7.3, 10% glycerol



[View online »](#)

Preparation:	Recombinant protein was captured through anti-DDK affinity column followed by conventional chromatography steps.
Note:	For testing in cell culture applications, please filter before use. Note that you may experience some loss of protein during the filtration process.
Storage:	Store at -80°C.
Stability:	Stable for 12 months from the date of receipt of the product under proper storage and handling conditions. Avoid repeated freeze-thaw cycles.
RefSeq:	NP_004524
Locus ID:	4606
UniProt ID:	Q14324 , A0A140VJQ0
RefSeq Size:	3598
Cytogenetics:	19q13.33
RefSeq ORF:	3423
Synonyms:	fsMyBP-C; MYBPC; MYBPCF
Summary:	This gene encodes a member of the myosin-binding protein C family. This family includes the fast-, slow- and cardiac-type isoforms, each of which is a myosin-associated protein found in the cross-bridge-bearing zone (C region) of A bands in striated muscle. The protein encoded by this locus is referred to as the fast-type isoform. Mutations in the related but distinct genes encoding the slow-type and cardiac-type isoforms have been associated with distal arthrogryposis, type 1 and hypertrophic cardiomyopathy, respectively. [provided by RefSeq, Jul 2012]

Product images:



Coomassie blue staining of purified MYBPC2 protein (Cat# [TP320058]). The protein was produced from HEK293T cells transfected with MYBPC2 cDNA clone (Cat# [RC220058]) using MegaTran 2.0 (Cat# [TT210002]).