

## Product datasheet for TP320058L

### MYBPC2 (NM\_004533) Human Recombinant Protein

#### Product data:

**Product Type:** Recombinant Proteins  
**Description:** Recombinant protein of human myosin binding protein C, fast type (MYBPC2), 1 mg  
**Species:** Human  
**Expression Host:** HEK293T  
**Expression cDNA Clone or AA Sequence:** >RC220058 protein sequence  
Red=Cloning site Green=Tags(s)

MPEAKPAAKKAPKGDAPKGPKEAPPKEAPAEAPKEAPPEDQSPTAEEPTGVFLKPPDSVSVETGKDAV  
 VWAKVNGKELPDKPTIKWFKGKWLELGSKSGARFSFKESHNSASNVYTVELHIGKVVLDGRGYRLEVKA  
 KDTCDSCGFNIDVEAPRQDASGQSLESFKRTSEKSDTAGELDFSGLLKKREVVVEEKKKKKDDDDLGI  
 PPEIWELLKGAKKSEYEKIAFQYGITDLRGMKRLKAKVEVKKSAFTKKLDPAYQVDRGNKIKLMVEI  
 SDPDLTLKWFKNQEIKPSSKYVFENVGKKRILTINKCTLADDAAYEVAVKDEKCFTELFPVKEPVLIVT  
 PLEDQQVFVGDVEMAVEVSEEGAQVMWMDGVELTREDSEFKARYRFKKGDKRHLIFSDVWQEDRGRYQ  
 VITNGGQCEALIVEEKQLEVLQDIADLTVKASEQAVFKCEVSDEKVTGKWKYKNGVEVRPSKRITISHVG  
 RFHKLVIDDVRPEDEGDYTFVPDGYALSLSAKLNFLEIKVEYVPKQEPPIHLDCSGKTSENAIVWAGN  
 KLRLDVSITGEPVPVATWLKGDDEVFTTTEGRTRIEKRVDCSSFVIESAQREDEGRYTIKVTNPVGEDVAS  
 IFLQVVDVDPPEAVRITSVGEDWAILVWEPMPYDGGKPVGTGLVERKKKGSQRWMLNFEVFTETTTYES  
 TKMIEGILYEMRVFAVNAIGVSQPSMNTKPFMPIAPTSEPLHLIVEDVDTTTTLKWRPNNRIGAGGIDG  
 YLVEYCLEGSEEWVANTPEPVERCGFTVKNLPTGARILFRVGVNIAGRSEPATLAQPVTIREIAEPPKI  
 RLPRHLRQTYIRKVGELNLVVPFQGKPRPQVWTKGGAPLDTSRVHVRTSDFDTVFFVRQAARSDSGEY  
 ELSVQIENMKDTATIRIRVVEKAGPPINVMVKEVWGTNALVEWQAPKDDGNSEIMGYFVQKADKKTMEWF  
 NVYERNRHTSCTVSDLIVGNEYFRVYTENICGLSDSPGVSKNTARILKTGITFKPFYEKHDFRMAPKF  
 LTPLIDRVVWAGYSAALNCAVRGHPKPKVWMMKNKMEIREDPKFLITNYQGVLTNIRRPSFPDAGTYTC  
 RAVNELGEALAECKLEVRVPQ

TRTRPLEQKLISEEDLAANDILDYKDDDDKV

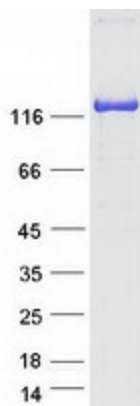
**Tag:** C-Myc/DDK  
**Predicted MW:** 127.9 kDa  
**Concentration:** >0.05 µg/µL as determined by microplate BCA method  
**Purity:** > 80% as determined by SDS-PAGE and Coomassie blue staining  
**Buffer:** 25 mM Tris-HCl, 100 mM glycine, pH 7.3, 10% glycerol



[View online >](#)

<b>Preparation:</b>	Recombinant protein was captured through anti-DDK affinity column followed by conventional chromatography steps.
<b>Note:</b>	For testing in cell culture applications, please filter before use. Note that you may experience some loss of protein during the filtration process.
<b>Storage:</b>	Store at -80°C.
<b>Stability:</b>	Stable for 12 months from the date of receipt of the product under proper storage and handling conditions. Avoid repeated freeze-thaw cycles.
<b>RefSeq:</b>	<a href="#">NP_004524</a>
<b>Locus ID:</b>	4606
<b>UniProt ID:</b>	<a href="#">Q14324</a> , <a href="#">A0A140VJQ0</a>
<b>RefSeq Size:</b>	3598
<b>Cytogenetics:</b>	19q13.33
<b>RefSeq ORF:</b>	3423
<b>Synonyms:</b>	fsMyBP-C; MYBPC; MYBPCF
<b>Summary:</b>	This gene encodes a member of the myosin-binding protein C family. This family includes the fast-, slow- and cardiac-type isoforms, each of which is a myosin-associated protein found in the cross-bridge-bearing zone (C region) of A bands in striated muscle. The protein encoded by this locus is referred to as the fast-type isoform. Mutations in the related but distinct genes encoding the slow-type and cardiac-type isoforms have been associated with distal arthrogryposis, type 1 and hypertrophic cardiomyopathy, respectively. [provided by RefSeq, Jul 2012]

### Product images:



Coomassie blue staining of purified MYBPC2 protein (Cat# [TP320058]). The protein was produced from HEK293T cells transfected with MYBPC2 cDNA clone (Cat# [RC220058]) using MegaTran 2.0 (Cat# [TT210002]).