

Product datasheet for **TP320044L**

CCDC138 (NM_144978) Human Recombinant Protein

Product data:

Product Type:	Recombinant Proteins
Description:	Recombinant protein of human coiled-coil domain containing 138 (CCDC138), 1 mg
Species:	Human
Expression Host:	HEK293T
Expression cDNA Clone or AA Sequence:	>RC220044 representing NM_144978 Red =Cloning site Green =Tags(s)

MEPRVVKPPGQDLVVESLKSRYGLGGSCPDEYDFSNFYQSKYKRRTLTSPGDLDIYSGDKVGSLLKYSDE
SKHCRTPLGSLFKHVNVNCLDDELDSFHDLLKKQETEEELIENDYRVSTSKITKQSFKEIEKVALPTNTTS
SRPRTECCSDAGDSPLKPVSCPCKSKASDKRSLPHQISQIYDELFIHLKLQCEAAQQKFAEELQKRER
FLLEREQLLFRHENALSNIKGVVEEVLTRFQIIEQHDAEVEHLTEVLKEKNKTKRLRSSFDALKELND
TLKKQLNEASEENRKIDIQAKRVQARLDNLQRKYEFMTIQRKLGSSHAVHEMKSLLKQEKAPVSKTYKVPL
NGQVYELLTVFMDWISDHLSKVKHEESGMDGKKPQLKFASQRNDIQEKCVKLLPLMTEQLQWMPFVN
IK
LHEPFVKFIYWSLRQLDAGAQHSTMTSTLRRLLGEDIFKGVVTKGIQDNQPQHSVENKPKTAAFFKSSNLP
LRFLSTLIVLKTVTQADYLAQAFDSLCLDLKTEEGKTLFLEYQAVPVILSHLRISSEKGLLSNVIDSLLQM
TVESKSLQPFLEACNSLFFRTCSVLLRAPKLDLQILEKLSIILQKLSKIKSNKKLFELFTIHLMLQEIQ
RTTNPEHAFLCINLNLSTLFLNLGLTKCNLSLVSSASP

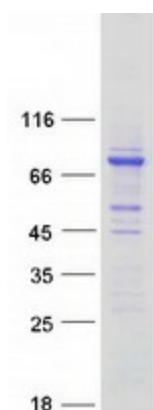
TRTRPLEQKLISEEDLAANDILDYKDDDDKV

Tag:	C-Myc/DDK
Predicted MW:	76 kDa
Concentration:	>0.05 µg/µL as determined by microplate BCA method
Purity:	> 80% as determined by SDS-PAGE and Coomassie blue staining
Buffer:	25 mM Tris-HCl, 100 mM glycine, pH 7.3, 10% glycerol
Preparation:	Recombinant protein was captured through anti-DDK affinity column followed by conventional chromatography steps.
Note:	For testing in cell culture applications, please filter before use. Note that you may experience some loss of protein during the filtration process.
Storage:	Store at -80°C.



[View online »](#)

Stability:	Stable for 12 months from the date of receipt of the product under proper storage and handling conditions. Avoid repeated freeze-thaw cycles.
RefSeq:	NP_659415
Locus ID:	165055
UniProt ID:	Q96M89
RefSeq Size:	2196
Cytogenetics:	2q13
RefSeq ORF:	1995

Product images:

Coomassie blue staining of purified CCDC138 protein (Cat# [TP320044]). The protein was produced from HEK293T cells transfected with CCDC138 cDNA clone (Cat# [RC220044]) using MegaTran 2.0 (Cat# [TT210002]).