

Product datasheet for **TP320013M**

LHFPL3 (NM_199000) Human Recombinant Protein

Product data:

Product Type: Recombinant Proteins

Description: Recombinant protein of human lipoma HMGIC fusion partner-like 3 (LHFPL3), 100 µg

Species: Human

Expression Host: HEK293T

**Expression cDNA Clone
or AA Sequence:** >RC220013 protein sequence
Red=Cloning site **Green**=Tags(s)

MPGAAAAAAAAAAMLPTQEAAKLYHTNYVRNSRAIGVLWAIFTICFAIVNVVCFIQPYWIGDGVDPQA
GYFGLFHYCIGNGFSRELTGRGSFTDFSTLPSGAFKAASFFIGLSMMLIACICFTLFFFCNTATVYKI
CAWMQLTSAACLVLGCMIFPDGWDSDVKRMCGEKTDKYTLGACSVRWAYILAIIGILDALILSFLAFVL
GNRQDSLMAEELKAENKVLLSQYSLE

TRTRPLEQKLISEEDLAANDILDYKDDDDKV

Tag: C-Myc/DDK

Predicted MW: 25.6 kDa

Concentration: >0.05 µg/µL as determined by microplate BCA method

Purity: > 80% as determined by SDS-PAGE and Coomassie blue staining

Buffer: 25 mM Tris-HCl, 100 mM glycine, pH 7.3, 10% glycerol

Preparation: Recombinant protein was captured through anti-DDK affinity column followed by conventional chromatography steps.

Note: For testing in cell culture applications, please filter before use. Note that you may experience some loss of protein during the filtration process.

Storage: Store at -80°C.

Stability: Stable for 12 months from the date of receipt of the product under proper storage and handling conditions. Avoid repeated freeze-thaw cycles.

RefSeq: [NP_945351](#)

Locus ID: 375612

UniProt ID: [Q86UP9](#)



[View online »](#)

RefSeq Size: 3191

Cytogenetics: 7q22.2-q22.3

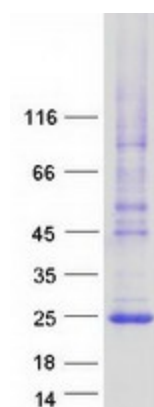
RefSeq ORF: 708

Synonyms: LHFPL4

Summary: This gene is a member of the lipoma HMGIC fusion partner (LHFP) gene family, which is a subset of the superfamily of tetraspan transmembrane protein encoding genes. Mutations in one LHFP-like gene result in deafness in humans and mice, and a second LHFP-like gene is fused to a high-mobility group gene in a translocation-associated lipoma. A partial gene fragment named LHFPL4 corresponds to a portion of the first exon of this gene. [provided by RefSeq, Jul 2008]

Protein Families: Transmembrane

Product images:



Coomassie blue staining of purified LHFPL3 protein (Cat# [TP320013]). The protein was produced from HEK293T cells transfected with LHFPL3 cDNA clone (Cat# [RC220013]) using MegaTran 2.0 (Cat# [TT210002]).