

Product datasheet for **TP320013L**

LHFPL3 (NM_199000) Human Recombinant Protein

Product data:

Product Type:	Recombinant Proteins
Description:	Recombinant protein of human lipoma HMGIC fusion partner-like 3 (LHFPL3), 1 mg
Species:	Human
Expression Host:	HEK293T
Expression cDNA Clone or AA Sequence:	>RC220013 protein sequence Red =Cloning site Green =Tags(s)
	<p>MPGAAAAAAAAAAMLPTQEAAKLYHTNYVRNSRAIGVLWAIFTICFAIVNVVCFIQPYWIGDGVDPQA GYFGLFHYCIGNGFSRELTCRGSFTDFSTLPSGAFKAASFFIGLSMMLIACICFTLFFFCNTATVYKI CAWMQLTSAACLVLCMIFPDGWDSDVKRMCGEKTDKYTLGACSVRWAYILAIIGILDALILSFLAFVL GNRQDSLMAEELKAENKVLLSQYSLE</p> <p>TRTRPLEQKLISEEDLAANDILDYKDDDDKV</p>
Tag:	C-Myc/DDK
Predicted MW:	25.6 kDa
Concentration:	>0.05 µg/µL as determined by microplate BCA method
Purity:	> 80% as determined by SDS-PAGE and Coomassie blue staining
Buffer:	25 mM Tris-HCl, 100 mM glycine, pH 7.3, 10% glycerol
Preparation:	Recombinant protein was captured through anti-DDK affinity column followed by conventional chromatography steps.
Note:	For testing in cell culture applications, please filter before use. Note that you may experience some loss of protein during the filtration process.
Storage:	Store at -80°C.
Stability:	Stable for 12 months from the date of receipt of the product under proper storage and handling conditions. Avoid repeated freeze-thaw cycles.
RefSeq:	<u>NP_945351</u>
Locus ID:	375612
UniProt ID:	<u>Q86UP9</u>



[View online »](#)

RefSeq Size: 3191

Cytogenetics: 7q22.2-q22.3

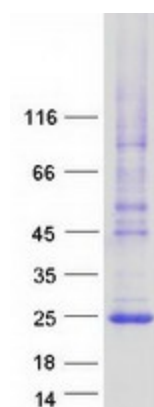
RefSeq ORF: 708

Synonyms: LHFPL4

Summary: This gene is a member of the lipoma HMGIC fusion partner (LHFP) gene family, which is a subset of the superfamily of tetraspan transmembrane protein encoding genes. Mutations in one LHFP-like gene result in deafness in humans and mice, and a second LHFP-like gene is fused to a high-mobility group gene in a translocation-associated lipoma. A partial gene fragment named LHFPL4 corresponds to a portion of the first exon of this gene. [provided by RefSeq, Jul 2008]

Protein Families: Transmembrane

Product images:



Coomassie blue staining of purified LHFPL3 protein (Cat# [TP320013]). The protein was produced from HEK293T cells transfected with LHFPL3 cDNA clone (Cat# [RC220013]) using MegaTran 2.0 (Cat# [TT210002]).