

Product datasheet for **TP320002L**

TCF21 (NM_198392) Human Recombinant Protein

Product data:

Product Type:	Recombinant Proteins
Description:	Recombinant protein of human transcription factor 21 (TCF21), transcript variant 1, 1 mg
Species:	Human
Expression Host:	HEK293T
Expression cDNA Clone or AA Sequence:	>RC220002 representing NM_198392 Red =Cloning site Green =Tags(s)
	 MSTGSLSDVEDLQEVEMLECDGLKMDSNKEFVTSNESTEESNCENGSPQKGRGGLGKRRKAPTKKSPLS GVSQEGKQVQRNAANARERARMRVLSKAFSRLKTTLPWVPPDTKLSKLDTLRLASSYIAHLRQILANDKY ENGYIHPVNLTWPFMVAGKPESDLKEVVTASRLCGTTAS TRTRPLEQKLISEEDLAANDILDYKDDDDKV
Tag:	C-Myc/DDK
Predicted MW:	19.5 kDa
Concentration:	>0.05 µg/µL as determined by microplate BCA method
Purity:	> 80% as determined by SDS-PAGE and Coomassie blue staining
Buffer:	25 mM Tris-HCl, 100 mM glycine, pH 7.3, 10% glycerol
Preparation:	Recombinant protein was captured through anti-DDK affinity column followed by conventional chromatography steps.
Note:	For testing in cell culture applications, please filter before use. Note that you may experience some loss of protein during the filtration process.
Storage:	Store at -80°C.
Stability:	Stable for 12 months from the date of receipt of the product under proper storage and handling conditions. Avoid repeated freeze-thaw cycles.
RefSeq:	NP_938206
Locus ID:	6943
UniProt ID:	O43680
RefSeq Size:	3231



[View online »](#)

Cytogenetics: 6q23.2

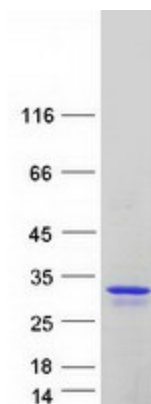
RefSeq ORF: 537

Synonyms: bHLHa23; POD1

Summary: TCF21 encodes a transcription factor of the basic helix-loop-helix family. The TCF21 product is mesoderm specific, and expressed in embryonic epicardium, mesenchyme-derived tissues of lung, gut, gonad, and both mesenchymal and glomerular epithelial cells in the kidney. Two transcript variants encoding the same protein have been found for this gene. [provided by RefSeq, Jul 2008]

Protein Families: Druggable Genome, Transcription Factors

Product images:



Coomassie blue staining of purified TCF21 protein (Cat# [TP320002]). The protein was produced from HEK293T cells transfected with TCF21 cDNA clone (Cat# [RC220002]) using MegaTran 2.0 (Cat# [TT210002]).