

Product datasheet for **TP319996M**

BFSP2 (NM_003571) Human Recombinant Protein

Product data:

| | |
|---------------------------------------|---|
| Product Type: | Recombinant Proteins |
| Description: | Recombinant protein of human beaded filament structural protein 2, phakinin (BFSP2), 100 µg |
| Species: | Human |
| Expression Host: | HEK293T |
| Expression cDNA Clone or AA Sequence: | >RC219996 protein sequence Red =Cloning site Green =Tags(s) |

MSERRVVDLPTSASSSMPLQRRRASFRGPRSSSSLESPPASRTNAMSGLVRAPGVVYVGTAPSGCIGGLG
ARVTRRALGISSVFLQGLRSSGLATVPAPGLERDGHGAVEDLGGCLVEYMAKVHALEQVSQELETQLRMHL
ESKATRSNGNWGALRASWASSCQQVGEAVLENARLMLQTETIQAGADDFKERYENEQPFRKAAEEEEINSLY
KVIDEANLTKMDLESQIESLKEELGSLSRNYEEDVKLLHKQLAGCELEQMDAPIGTGLDDILETIRIQWE
RDVEKNRVEAGALLQAKQQA EVAHMSQTQEEKLAAALRVELHNTSCVQVSLQAETESLRALKRGLENTLH
DAKHWHDMELQNLGAVVGRLEAELREIRAEAEQQQERAHLLARKCQLQKDVASYHALLDREESG

TRTRPLEQKLISEEDLAANDILDYKDDDDKV

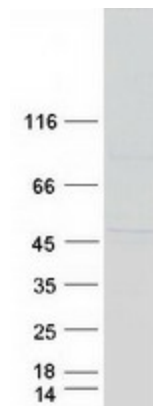
| | |
|----------------|--|
| Tag: | C-Myc/DDK |
| Predicted MW: | 45.7 kDa |
| Concentration: | >0.05 µg/µL as determined by microplate BCA method |
| Purity: | > 80% as determined by SDS-PAGE and Coomassie blue staining |
| Buffer: | 25 mM Tris-HCl, 100 mM glycine, pH 7.3, 10% glycerol |
| Preparation: | Recombinant protein was captured through anti-DDK affinity column followed by conventional chromatography steps. |
| Note: | For testing in cell culture applications, please filter before use. Note that you may experience some loss of protein during the filtration process. |
| Storage: | Store at -80°C. |
| Stability: | Stable for 12 months from the date of receipt of the product under proper storage and handling conditions. Avoid repeated freeze-thaw cycles. |
| RefSeq: | NP_003562 |
| Locus ID: | 8419 |



[View online »](#)

| | |
|---------------|--|
| UniProt ID: | Q13515 |
| RefSeq Size: | 1595 |
| Cytogenetics: | 3q22.1 |
| RefSeq ORF: | 1245 |
| Synonyms: | CP47; CP49; CTRCT12; LIFL-L; PHAKOSIN |
| Summary: | More than 99% of the vertebrate ocular lens is comprised of terminally differentiated lens fiber cells. Two lens-specific intermediate filament-like proteins, the protein product of this gene (phakinin), and filensin, are expressed only after fiber cell differentiation has begun. Both proteins are found in a structurally unique cytoskeletal element that is referred to as the beaded filament (BF). Mutations in this gene have been associated with juvenile-onset, progressive cataracts and Dowling-Meara epidermolysis bullosa simplex. [provided by RefSeq, Jun 2009] |

Product images:



Coomassie blue staining of purified BFSP2 protein (Cat# [TP319996]). The protein was produced from HEK293T cells transfected with BFSP2 cDNA clone (Cat# [RC219996]) using MegaTran 2.0 (Cat# [TT210002]).